



ENTRANCE MATS AND TILES

INTERIOR MATS

LOGO MATS

MESSAGE MATS

ANTI-FATIGUE MATS

SLIP RESISTANT MATS



M + A MATTING

**COMMERCIAL MATTING
CATALOG**



M+A Matting. Satisfaction Guaranteed.

M+A mats are where design and function come together, where quality isn't compromised to meet a price point, and where solutions to your maintenance and décor problems come first. We promise our customers an unconditional, 100% satisfaction guarantee for as long as you own our product.

M+A Matting is committed to reducing our environmental impact. We are continually improving our environmental performance as an integral and fundamental part of our business strategy and operating methods. We have reduced waste going to landfills by 80% and recycle most paper, metal, cardboard, plastic, carpet and rubber waste we generate. Our commitment is also evident in our development of dozens of mat styles that contain recycled raw materials.

For over five decades, M+A Matting has been America's leader in innovative floor protection systems, industrial safety, anti-fatigue products, and high performance entrance matting. If you are looking for better ways to minimize maintenance, prolong floor surface life, reduce cleaning costs, improve safety, or increase worker comfort, ask for M+A Matting.



TABLE OF CONTENTS

Mat Symbols.....	2, 3
M+A Matting Product Feature Guide.....	4, 5
Mat Selector Guide.....	6, 7
Preventative Maintenance, Safety and Ergonomics, The Right Mat for Every Job, Waterhog® Backing Types.....	8, 9

PAGE 10

ENTRANCE MAT AND TILE COLLECTION

PRODUCT NAME	PRODUCT #	MAT TYPE	PLACEMENT	PAGE #
WATERHOG® PLUS	185	Scraper/Wiper	Indoor	12
WATERHOG® LOW PROFILE.....	251, 252.....	Scraper/Wiper.....	Indoor.....	12
WATERHOG® ECO GRAND ELITE.....	2243, 2244, 2246.....	Scraper/Wiper.....	Indoor/Outdoor.....	13
WATERHOG® ECO GRAND PREMIER.....	2246, 22248, 2249.....	Scraper/Wiper.....	Indoor/Outdoor.....	14
WATERHOG® GRAND CLASSIC.....	272, 273, 274.....	Scraper/Wiper.....	Indoor/Outdoor.....	15
WATERHOG® ECO ELITE and ECO ELITE FASHION.....	2240, 2241.....	Scraper/Wiper.....	Indoor/Outdoor.....	16
WATERHOG® ECO PREMIER and ECO PREMIER FASHION.....	2295, 2297.....	Scraper/Wiper.....	Indoor/Outdoor.....	17
LEGACY ECO and LEGACY ECO FASHION.....	2290, 2291.....	Scraper/Wiper.....	Indoor/Outdoor.....	17
WATERHOG® CLASSIC, FASHION and DRAINABLE.....	200, 280, 250.....	Scraper/Wiper.....	Indoor/Outdoor.....	18
WATERHOG® CLASSIC DIAMOND and FASHION DIAMOND.....	208, 221.....	Scraper/Wiper.....	Indoor/Outdoor.....	19
LEGACY CLASSIC and LEGACY FASHION.....	201, 202.....	Scraper/Wiper.....	Indoor/Outdoor.....	19
WATERHOG® ECO ELITE ROLL GOODS.....	2271, 2272.....	Scraper/Wiper.....	Indoor/Outdoor.....	20
BERBER ROLL GOODS.....	2281, 2282.....	Scraper/Wiper.....	Indoor/Outdoor.....	20
WATERHOG® CLASSIC TILE.....	210, 216, 219, 220.....	Scraper/Wiper.....	Indoor.....	21
WATERHOG® ECO PREMIER TILE.....	2215, 2217, 2218.....	Scraper/Wiper.....	Indoor.....	21
WATERHOG® MODULAR TILE SQUARE.....	2210.....	Scraper/Wiper.....	Indoor/Outdoor.....	22
WATERHOG® FORKLIFT MAT.....	1253.....	Slip resistant.....	Indoor/Outdoor.....	23
MELT STEP™.....	886, 887, 889.....	Slip resistant.....	Outdoor.....	23
SUPERSCAPE™.....	555, 5555.....	Scraper.....	Indoor/Outdoor.....	24
SUPERSCAPE™ PLUS.....	5558, 5559.....	Scraper.....	Indoor/Outdoor.....	24
WATERHOG® DIAMONDCORD.....	296.....	Scraper/Wiper.....	Indoor.....	25
WATERHOG® MASTERPIECE SELECT.....	265.....	Scraper/Wiper.....	Indoor.....	25
BRUSH HOG™, BRUSH HOG™ PLUS.....	395, 385.....	Scraper.....	Outdoor.....	26
FLEX-TIP™.....	874.....	Scraper.....	Outdoor.....	27
FRONTIER.....	437.....	Scraper.....	Indoor/Outdoor.....	27
SURE STRIDE® CUTTING BOARD, CUTTING KNIFE	4450, 4459, 4460	Slip resistant	Indoor	30
SURE STRIDE® PLUSH.....	4457.....	Slip resistant.....	Indoor.....	30
CLEANSHIELD® URINAL MAT.....	4065.....	Floor protection/Slip resistant.....	Indoor.....	31
CLEAN STRIDE®.....	410, 411, 412.....	Scraper/Wiper.....	Indoor.....	31
ENVIRO PLUS®.....	2202.....	Wiper.....	Indoor.....	32
TRI-GRIP™/CLASSIC™ MATS/CLASSIC™ CARPETS.....	100, 190.....	Wiper.....	Indoor.....	32
GREASE HOG™.....	883.....	Scraper/Wiper.....	Indoor.....	33
MICROLUX™.....	1201.....	Wiper.....	Indoor.....	33
PLUSH™.....	180.....	Wiper.....	Indoor.....	34
IMPRESSIONIST.....	871.....	Wiper.....	Indoor.....	34
VICTORY.....	873.....	Wiper.....	Indoor.....	35
COBBLESTONE.....	870.....	Wiper.....	Indoor.....	35

PAGE 28

INTERIOR MAT COLLECTION

The M+A Matting Company Logo Mat Program				38,39
WATERHOG IMPRESSIONS HD®.....	2380, 2381.....	Scraper/Wiper.....	Indoor/Outdoor.....	40
WATERHOG® LOGO INLAY.....	234, 235.....	Scraper/Wiper.....	Indoor/Outdoor.....	41
WATERHOG® ECO ELITE ROLL GOODS LOGO.....	2268.....	Scraper/Wiper.....	Indoor/Outdoor.....	42
BERBER ROLL GOODS LOGO.....	2283.....	Scraper/Wiper.....	Indoor/Outdoor.....	43
LEGACY INLAY and LEGACY FASHION INLAY.....	261, 262.....	Scraper/Wiper.....	Indoor/Outdoor.....	44
WATERHOG® SCULPTURES.....	355, 350.....	Scraper/Wiper.....	Indoor/Outdoor.....	44
CLASSIC IMPRESSIONS™ HD CUSTOM SHAPE.....	733.....	Wiper.....	Indoor.....	45
CLASSIC IMPRESSIONS™ HD LOGO and GRAND IMPRESSIONS HD LOGO.....	73, 64.....	Wiper.....	Indoor.....	46
CLASSIC IMPRESSIONS™ LOGO.....	70.....	Wiper.....	Indoor.....	47
SUPERSCAPE IMPRESSIONS™ LOGO.....	3559.....	Scraper.....	Indoor/Outdoor.....	47

PAGE 36

LOGO MAT, SIGN MAT & MESSAGE MAT COLLECTION

The Benefits of Anti-Fatigue Mats				50
ESD Matting.....				51
HOG HEAVEN®.....	421, 422, 423, 424.....	Anti-fatigue.....	Indoor.....	52
HOG HEAVEN PRIME®.....	4220, 4221.....	Anti-fatigue.....	Indoor.....	52
HOG HEAVEN PRIME DECOR™.....	4222.....	Anti-fatigue.....	Indoor.....	53
HOG HEAVEN® MARBLE TOP.....	448, 449.....	Anti-fatigue.....	Indoor.....	53
HOG HEAVEN® PLUSH.....	446, 447.....	Anti-fatigue.....	Indoor.....	54
HOG HEAVEN® FASHION.....	441, 442.....	Anti-fatigue.....	Indoor.....	54
GETFIT STANDUP™ MAT.....	4443, 4447, 4448.....	Anti-fatigue.....	Indoor.....	55
HOG HEAVEN III™ MODULAR TILE/LINKABLE MATS/WORKSTATION MATS COMFORT.....	4471, 4472, 4497, 4498, 4505, 4493, 4494.....	Anti-fatigue.....	Indoor.....	56
HOG HEAVEN III™ MODULAR TILE TRAFFIC/DRAINABLE, LINKABLE MATS TRAFFIC/DRAINABLE.....	4477-4480, 4488, 4489, 4491, 4492.....	Anti-fatigue.....	Indoor.....	57
HOG HEAVEN III™ MODULAR TILE/LINKABLE MATS/WORKSTATION MATS FASHION.....	4484, 4485, 4476, 4475.....	Anti-fatigue.....	Indoor.....	58
HOG HEAVEN III™ MODULAR TILE/LINKABLE MATS/WORKSTATION MATS POLY.....	4482, 4483, 4481, 4487.....	Anti-fatigue.....	Indoor.....	59
HAPPY FEET® & HAPPY FEET® LINKABLE.....	465-470, 475-480.....	Anti-fatigue/Slip resistant.....	Indoor.....	60
COMPLETE COMFORT™ without holes and COMPLETE COMFORT™ with holes.....	494, 496.....	FlowThrough/Anti-fatigue.....	Indoor.....	61
COMPLETE COMFORT™ II.....	594.....	Anti-fatigue.....	Indoor.....	61
COMFORT FLOW™.....	420.....	FlowThrough/Anti-fatigue.....	Indoor.....	62
COMFORT SCRAPE™.....	430.....	Anti-fatigue.....	Indoor.....	62
COMFORT FLOW™ HD MODULAR TILE/LINKABLE MATS/WORKSTATION MATS.....	4430, 4434, 4439.....	FlowThrough/Anti-fatigue.....	Indoor.....	63
COMFORT SCRAPE™ HD MODULAR TILE/LINKABLE MATS/WORKSTATION MATS.....	4431, 4435, 4440.....	Slip resistant/Anti-fatigue.....	Indoor.....	63
WET STEP®.....	789.....	FlowThrough/Slip resistant.....	Indoor/Outdoor.....	64
CUSHION STATION™ without holes and CUSHION STATION™ with holes.....	370, 371.....	FlowThrough/Anti-fatigue.....	Indoor.....	65
CUSHION MAX™ with holes and CUSHION MAX™ without holes.....	413, 414.....	Anti-fatigue.....	Indoor.....	65
TRACTION TREAD.....	50.....	Slip resistant.....	Indoor.....	66
TRACTION TREAD SOFT.....	56.....	Slip resistant/Anti-fatigue.....	Indoor.....	66
SURE CUSHION RIBBED, TEXTURE, HEAVY DUTY, YELLOW BORDER.....	415, 425, 428, 427.....	Anti-fatigue.....	Indoor.....	67
SURE TREAD V-GROOVE.....	505.....	Floor protection.....	Indoor.....	67
KNEELING COMFORT™.....	433.....	Anti-fatigue.....	Indoor/Outdoor.....	68
SAFETY SCRAPE™.....	545.....	Slip resistant.....	Indoor/Outdoor.....	68
The M+A Matting Environmental Policy.....				69

PAGE 48

ANTI-FATIGUE & SLIP RESISTANT MAT COLLECTION

Mat Symbols



Anti-Fatigue

Ergonomic mats and floor tiles reduce fatigue by up to 50%. Anti-fatigue mats help increase blood circulation and reduce pressure on the body's musculoskeletal system. They also reduce foot arch pronation, varicose veins, and pain commonly attributed to standing for long periods of time.



Safety

Matting and tiles with highly visible, colored borders and beveled edges reduce trips and falls.



Chemical Resistant

Many M+A Matting mats are manufactured with nitrile rubber which is resistant to most commonly used chemicals. Please consult the chemical compatibility chart on page 5 for additional information.



Oily Environment

Nitrile rubber mats withstand degradation from oils and grease. These mats are suitable for use in environments with industrial oils, machine lubricants, greases, food grade oils, etc.



Wet Areas

May be used in areas where moisture may be present.



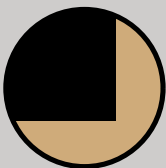
Dry Areas

May be used in dry environments.



Linkable Floor Tile and Matting

Tiles that can be customized to fit large areas and unique shapes.



Modular Tile

Modular Tiles for large entrances and floor protection.



ESD

Matting that dissipates static electricity from people to protect sensitive equipment and small static generated electric shocks.

Mat Symbols



Welding Safe

Matting that is suitable for use in locations of high temperatures and welding slag. The temperature resistant rubber can withstand temperatures up to 1742 degrees Fahrenheit from welding slag and hot metal shavings.



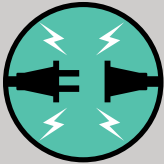
Recycled Content

Contains recycled content.



Anti-Slip

Uniquely designed texturized surfaces prevent slip and fall accidents. Heavy-duty rubber keeps the mats in place and prevents movement on a variety of surfaces.



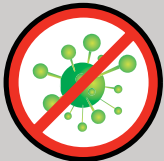
Non-Conductive

Matting created for Switchboards and high voltage areas. Prevents workers from being grounded and reduces the potential for injuries caused by electrical shock.



Cart Traffic

Matting and tiles designed to withstand heavy cart traffic.



Anti-Microbial

Matting permanently treated with an anti-microbial agent that guards against degradation from micro-organisms and minimizes mats being a source of odors.



Scraper

Scraper mats are heavy-duty mats designed to stop mud and larger particles of dirt from being tracked inside buildings.



Scraper/Wiper

Scraper/Wiper mats provide scraping action and wiping to further stop dirt and moisture from entering a facility. These mats are typically made of tough heavy-duty commercial fabrics. They retain dust in recessed grooves while absorbing moisture in the fabric surface.



Wiper

Wiper mats are designed to stop any remaining dust and moisture. These mats are made with a variety of carpeted surfaces and colors to compliment a wide range of interiors.

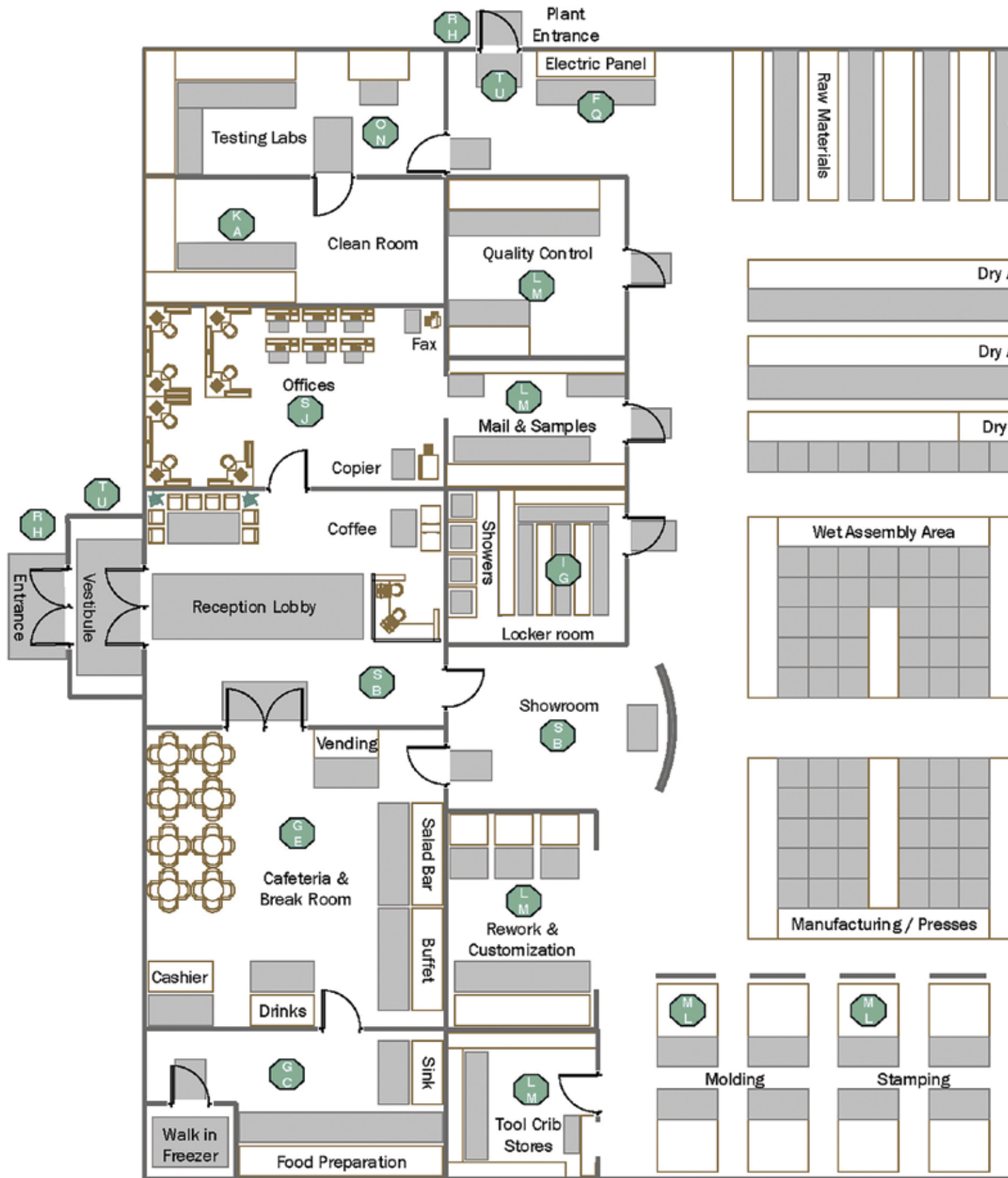
M+A Matting Product Feature Guide

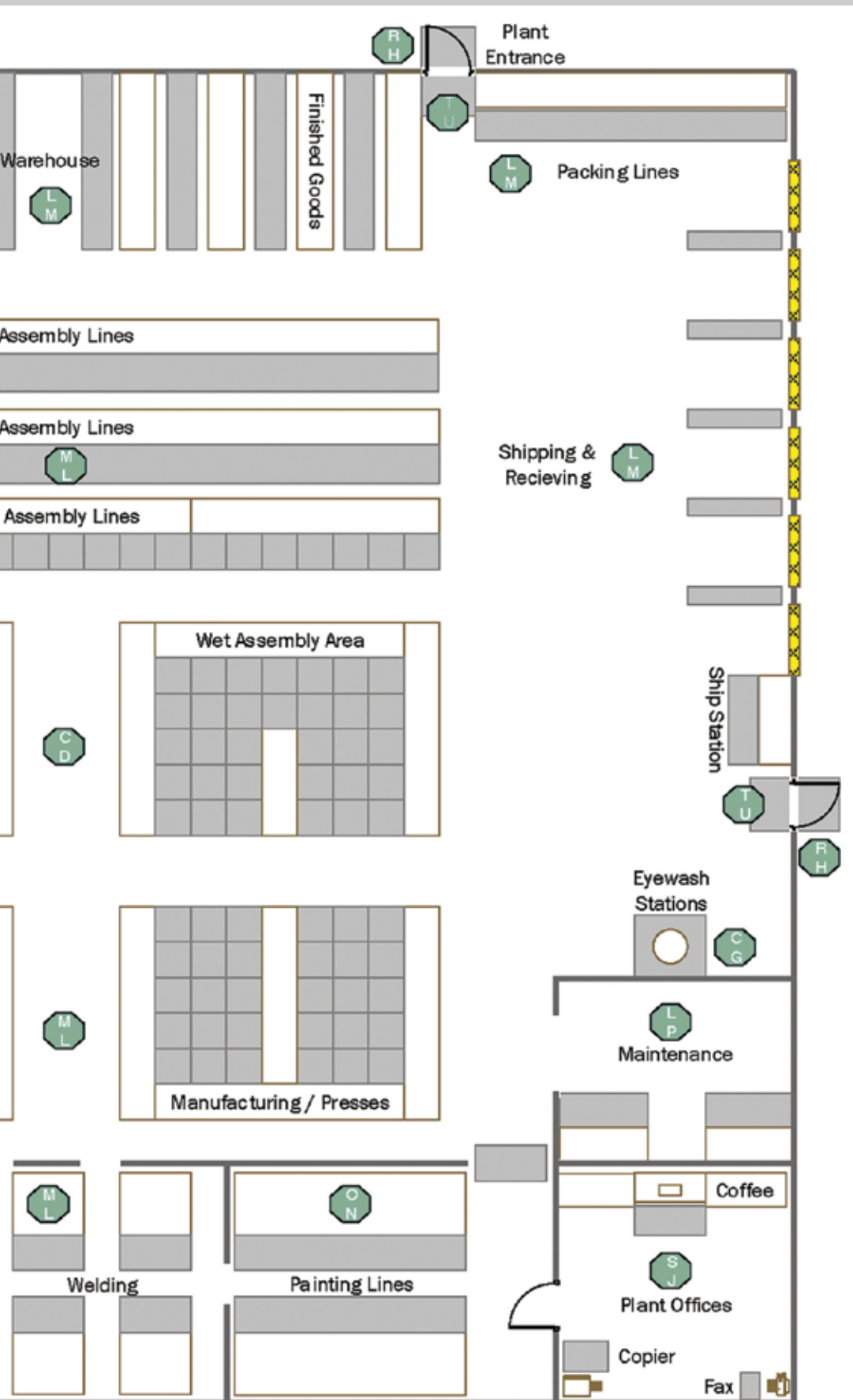
Item	Category	Product Number(s)	Welding Safe	Static Dissipative	Anti-Static	Oil/Grease Resistant	Oil/Grease Proof	Antibacterial Treated	Electrically Conductive	Non-conductive	Chemical Resistant	Wet Areas	Dry Areas
Interior Mats & Tile													
Brush Hog Plus – Scraper		385		X							X	X	
Frontier – Scraper		437									X	X	
Flex-Tip – Scraper		874									X	X	
SuperScrape Plus – Scraper		5558, 5559		X							X	X	
WaterHog Classic/Fashion – Scraper/Wiper		200, 280		X							X	X	
WaterHog Grand Classic – Scraper/Wiper		272, 273, 274		X							X	X	
WaterHog Classic Diamond/Fashion Diamond – Scraper/Wiper		208, 221		X							X	X	
WaterHog Diamondcord – Scraper/Wiper		296		X							X	X	
WaterHog Modular Tile Square – Scraper/Wiper		2210		X							X	X	
WaterHog Eco Elite/Eco Elite Fashion – Scraper/Wiper		2240, 2241		X							X	X	
WaterHog Eco Grand Elite – Scraper/Wiper		2243, 2244, 2246		X							X	X	
WaterHog Eco Premier/Eco Premier Fashion – Scraper/Wiper		2295, 2297		X							X	X	
WaterHog Masterpiece Select – Scraper/Wiper		265		X							X	X	
WaterHog Plus– Scraper/Wiper		185		X							X	X	
Classic Brush – Wiper		110, 2110		X							X	X	
Cobblestone – Wiper		870									X	X	
Plush– Wiper		180		X	X						X	X	
Enviro Plus – Wiper		2202		X							X	X	
Impressionist – Wiper		871									X	X	
Stylist – Wiper		872		X							X	X	
Tri-Grip – Wiper		100, 190		X							X	X	
Victory – Wiper		873		X							X	X	
Grease Hog – Scraper/Wiper		883				X					X	X	
MicroLuxx – Wiper		1201		X							X	X	
Anti-Fatigue Mats & Tile													
Comfort Flow, Comfort Scrape		420, 430	X	X		X	X			X	X	X	
Comfort Flow HD Modular Tile, Linkable and Workstation Mats		4430, 4434, 4439	X	X		X	X			X	X	X	
Comfort Scrape HD Modular Tile, Linkable and Workstation Mats		4431, 4435, 4440	X	X		X	X			X	X	X	
Complete Comfort		494, 496			X	X	X			X	X	X	
Complete Comfort II		594	X	X		X	X			X	X	X	
Cushion Max		413, 414				X	X			X	X	X	
Cushion Station		370, 371	X	X		X	X			X	X	X	
GetFit StandUp		4443			X							X	
Happy Feet		465, 466, 475, 476	X			X		X		X	X	X	

M+A Matting Product Feature Guide

														
Item	Category	Product Number(s)												
Anti-Fatigue Mats & Tile (continued)														
Hog Heaven		421, 422, 423, 424	X				X		X		X		X	
Hog Heaven Confetti		443, 444	X	X									X	
Hog Heaven Fashion		441, 442			X								X	
Hog Heaven Marble Top		448, 449			X								X	
Hog Heaven Prime		4220, 4221	X	X			X				X	X	X	
Hog Heaven III Modular Tile Comfort and Linkable Mats Comfort		4471, 4472, 4497, 4498	X				X		X		X		X	
Hog Heaven III Modular Tile Fashion/Linkable Mats Fashion		4484, 4485, 4476, 4475			X								X	
Hog Heaven III Modular Tile, Linkable/Workstation Mats Poly		4482, 4483, 4481,4487			X								X	
Hog Heaven III Modular Tile Traffic/Drainable		4477, 4478, 4479, 4480	X	X			X				X	X	X	
Kneeling Comfort		433, 436	X				X		X		X		X	
Sure Cushion Products		415, 425, 427, 428											X	
Sure Tread		505									X		X	
Traction Tread Soft		56	X	X			X	X			X	X	X	
Slip Resistant Mats														
Melt Step		886, 887, 889	X				X	X			X	X	X	
SuperScrape		555, 5555		X			X				X	X	X	
SuperScrape Plus		5558, 5559					X				X	X	X	
Sure Stride/Sure Stride Plush		4450, 4457						X				X	X	
Traction Tread		50	X				X		X		X	X	X	
Waterhog Forklift		1253			X							X	X	
Logo Mats														
Classic Impressions, Classic Impressions HD		70, 73		X									X	
Classic Impressions HD Custom Shapes		733		X									X	
SuperScrape Impressions		3559		X			X				X	X	X	
SuperScrape Impressions Message Mats		3557		X			X				X	X	X	
Waterhog Impressions HD		2380, 2381			X							X	X	
Waterhog Logo Inlay		234, 235			X							X	X	
Specialty Mats														
Clean Stride - Scraper/Wiper		410, 411, 412			X								X	

Mat Selector Guide





Mat	Area
G,E	Cafeteria/Break
K,A	Clean Room
M,L	Dry Assembly
F,Q	Electric Panel
R,H	Entrance
C,G	Eyewash Stations
G,C	Food Prep
I,G	Locker Room
L,M	Mail & Samples
L,P	Maintenance
M,L	Manufacturing
M,L	Molding
S,J	Offices
L,M	Packing Lines
O,N	Paint
L,M	Quality Control
S,B	Reception
L,M	Rework
L,M	Shipping/Receiving
M,L	Stamping
O,N	Testing Labs
L,M	Tool Crib
T,U	Vestibule
L,M	Warehouse
M,L	Welding
C,D	Wet Assembly

Mat	Style & Product Number
A	Clean Stride #412
B	Classic Solutions #120
C	Comfort Flow #420
D	Comfort Flow Modular Tile #4430
E	Comfort Scrape #430
F	Corrugated Switchboard #781
G	Cushion Station #370/371
H	Flex Tip #874
I	Frontier #437
J	Get Fit Stand Up Mat #4442
K	Happy Feet #465
L	Hog Heaven #424
M	Hog Heaven III Modular Tile Comfort #4471
N	Hog Heaven III Modular Tile Poly #4482
O	Hog Heaven Marble Top #448
P	Kneeling Comfort #433
Q	Military Switchboard Diamond #789
R	SuperScrape Plus #5558
S	Tri-Grip/Classic Mats #100
T	Waterhog Classic #200
U	WaterHog Modular Tile Square #2210

The first letter denotes **Best** choice,
the second letter is a **Good**
secondary option for the
corresponding areas of a facility.

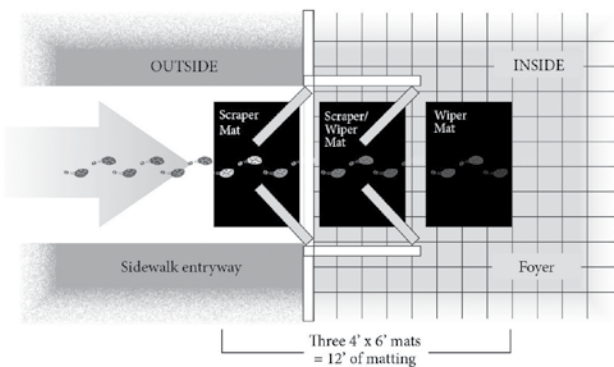
These are the most commonly used mats & floor tiles in
industrial manufacturing facilities. The letter corresponds
with the area chart to the left to help you locate the
correct mat for a specific location.

Preventative Maintenance

Mats are the first defense to stop dirt and moisture from entering your building. Mats filter these contaminants from entering the facility, saving thousands of dollars a year in cleaning costs. Mats also protect interior floor surfaces from excessive damage and wear. Entrance mats are the most effective way of stopping dirt and moisture at the door and keeping building maintenance costs to a minimum.

Consider These Facts...

- 70% to 80% of dust, grime and dirt in a building is tracked in from the outside on people's feet—permanently damaging floors
- One square yard of carpet can accumulate one pound of dirt a week—twice that in inclement weather
- It is estimated that the cost to find and remove a single pound of dirt from a building can run in excess of \$600 in cleaning costs. As few as 150 people entering a facility can track in one pound of dirt in a 5 day work week costing over \$30,000 dollars annually to remove.
- By utilizing high performance entrance matting of at least 10' to 15' (as recommend by the U.S. Green Building Council and the Carpet and Rug Institute) you can capture as much as 85% to 95% of contaminants that enter the building, saving maintenance dollars and protecting building assets



Safety and Ergonomics

Mats are used throughout facilities in numerous other capacities where safety is a must and anti-fatigue comfort is essential to the health and well being of employees.

- Slip and falls are the second leading cause of all workplace injuries according to Liberty Mutual Workplace Index. As many as 25,000 people a day are victims of slip and fall accidents(NSC)
- Compensation and medical costs associated with employee slip and fall accidents total approximately \$70 Billion annually(NSC)
- The average cost of a slip and fall injury exceeds \$12,000(Wausau Insurance)
- The average cost to defend a slip and fall lawsuit is \$50,000(NFSI)
- Back injuries account for 25% of all worker compensation claims annually
- Cumulative Standing Trauma(CST) causes Billions of dollars of loss annually due to reduced productivity, increased worker compensation, higher insurance rates and absenteeism
- According to the American College of Occupational and Environmental Science, about 38% of workers in the United States suffer from fatigue. **Testing shows that Ergonomic Matting can reduce worker fatigue.**

M+A Matting has the right mat for every job.

Scraper Entrance Mats

Your First Line of Defense

Scraper mats are designed to stop mud and larger particles of dirt from being tracked inside buildings. These mats provide aggressive scraping action and trap dirt and debris in recessed areas until the mats are cleaned. Scraper mats can be used outside or inside and should be used in conjunction with a Scraper/Wiper mat and a Wiper mat.



Scraper/Wiper Entrance Mats

The Second Step to Keeping Dirt Outside

Scraper/Wiper mats are designed to provide scraping action and wiping to further stop dirt and moisture from entering a facility. These mats are typically made of tough fabrics. They channel and retain dust in recessed grooves while absorbing moisture in the fabric face. These mats are primarily used inside but may be used outside as well.



Wiper Entrance Mats

The Third Weapon Against Dirt and Moisture

Wiper Entrance Mats are designed to stop any remaining dust and moisture left after using the Scraper mat and Scraper/Wiper mat. These mats are made with carpet facing to complement most interiors. These mats are for indoor use and when used in conjunction with a Scraper mat and Scraper/Wiper mat, they can stop as much as 85% to 95% of dirt and grime from being tracked into a building.



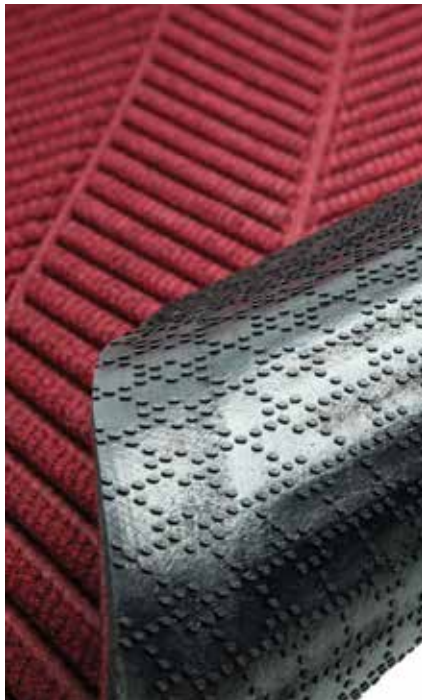
Logo Mats

Promote a Positive Image

Custom designed logo mats are a unique way to promote a company's image. Logos or other designs can be replicated on the face of numerous styles of mats without any setup charge. Logo mats add a professional look to any entrance, while acting as a further barrier to keep contaminants from entering a facility.



Waterhog® Backing Types



SBR Rubber
.078 mil thickness
Cleated backing
Recommended for carpeted floors.



SBR Rubber
.078 mil thickness
Smooth backing
Recommended for hard floor surfaces with light to medium traffic.



Nitrile Rubber
.100 mil thickness
Anchor Safe backing
Recommended for hard floor surfaces with heavy traffic and where carts are in use.

Anti-Fatigue Mats

Provide Comfort and Increase Productivity

Anti-Fatigue mats are available in a wide range of sizes, weights and materials. It has been proven that the proper use of anti-fatigue mats can enhance worker productivity by over 20%. These mats are designed for use wherever workers spend time standing and will help to eliminate muscular skeletal disorders.



Flow Through Mats

Wet Area Solution

Flow through mats allow liquids to pass through them to eliminate slip hazards. Anti-fatigue properties provide comfort when standing for long periods of time. The thick rubber helps alleviate stress on the legs, feet and lower back.



Slip Resistant and Safety Mats

Protect against Slips and Falls

Slip resistant and safety mats help provide safe working areas for employees and visitors to facilities. 85% of worker's compensation claims are attributed to employees slipping on slick floors. The utilization of slip resistant mats is an ideal solution to prevent such accidents from occurring.







ENTRANCE MAT AND TILE COLLECTION

WATERHOG® PLUS

WATERHOG® LOW PROFILE

WATERHOG® ECO GRAND ELITE

WATERHOG® ECO GRAND PREMIER

WATERHOG® GRAND CLASSIC

WATERHOG® ECO ELITE

WATERHOG® ECO ELITE FASHION

WATERHOG® ECO PREMIER

WATERHOG® ECO PREMIER FASHION

LEGACY ECO

LEGACY ECO FASHION

WATERHOG® CLASSIC

WATERHOG® FASHION

WATERHOG® DRAINABLE

WATERHOG® CLASSIC DIAMOND

WATERHOG® FASHION DIAMOND

LEGACY CLASSIC

LEGACY FASHION

WATERHOG® ECO ELITE ROLL GOODS

BERBER ROLL GOODS

WATERHOG® CLASSIC TILE

WATERHOG® ECO PREMIER TILE

WATERHOG® MODULAR TILE SQUARE

WATERHOG® FORKLIFT MAT

MELT STEP™

SUPERSCAPE™

SUPERSCAPE™ PLUS

WATERHOG® DIAMONDCORD

WATERHOG® MASTERPIECE SELECT

BRUSH HOG™

BRUSH HOG™ PLUS

FLEX TIP™

FRONTIER

WATERHOG® PLUS

3/8" Product No. 185

The WaterHog Plus mat features 100% PET recycled surface with a durable nitrile rubber backing.

- **Clean and dry** - water dam border holds moisture; raised nubs are resistant to crushing and keep dirt below foot level
- **Environmentally-friendly** - constructed with 100% post-consumer PET polyester (made from recycled plastic)
- **Safe** - beveled edges provide a safe transition from mat to floor; certified high-traction by the National Floor Safety Institute
- **Durable** 90 mil nitrile rubber backing ensures the mat lays flat and remains in place

SIZES

2' x 3'
3' x 4'
3' x 5'
3' x 10'
4' x 6'
4' x 8'
5' x 7'*
5' x 10'*
6' x 12'

*Minimum order of 100 pieces required for select sizes. Sizes are approximate.



ENTRANCE/SCRAPER-WIPER/INDOOR

Waterhog Plus
grey ash

Waterhog Plus
grey ash



Black Smoke

Indigo

Southern Pine

Grey Ash

Maroon

Chestnut Brown

Regal Red

Khaki



ENTRANCE/SCRAPER-WIPER/INDOOR

WATERHOG® LOW PROFILE

3/10" Product No. 251

- Guards against slip and falls by keeping floor dry and clean... 80% of slip and fall accidents occur on wet floors
- Low profile flat borders reduce potential tripping hazards
- Easy to install and maintain. Perfect for permanent and semi-permanent installations.
- Commercial grade PET fabric for high traffic areas
- Mats feature Anchor Safe Backing made with heavy 100 mil nitrile rubber that keeps mats in place

SIZES

3' x 5'
3' x 10'
4' x 6'
4' x 10'

Sizes are approximate.



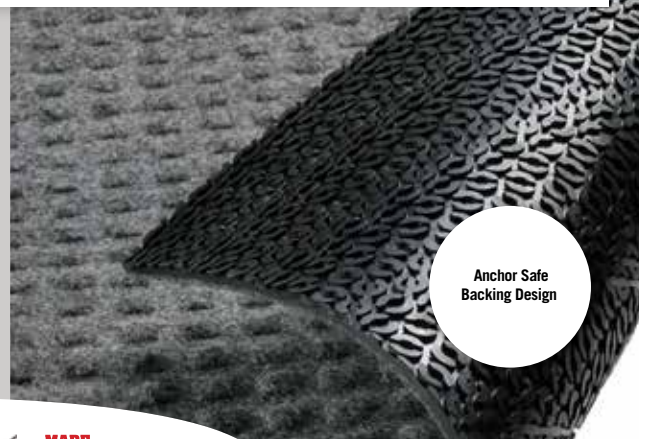
Waterhog Low Profile
charcoal



cocoa brown

charcoal

granite



Anchor Safe
Backing Design



Waterhog Eco Grand Elite
two ends
maroon



Waterhog Eco Grand Elite
one end
khaki



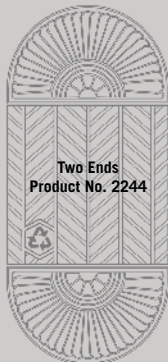
ENTRANCE/SCRAPER-WIPER/
INDOOR-OUTDOOR



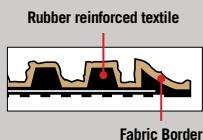
Half Oval
Product No. 2246



One End
Product No. 2243



Two Ends
Product No. 2244



Rubber reinforced textile

Fabric Border



Waterhog Eco Grand Elite
khaki

WATERHOG® ECO GRAND ELITE

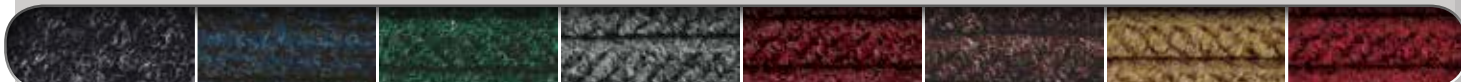
3/8" Half Oval: No. 2246 One End: No. 2243 Two Ends: No. 2244

- Earth friendly 30 oz/sq yd 100% post consumer recycled PET fabric reclaimed from plastic drink bottles
- SBR rubber backing contains 20% recycled rubber from car tires
- Bi-level surface effectively removes and stores dirt and moisture beneath shoe level between cleanings
- Rubber reinforced face nubs prevent pile from crushing, extending the performance life of the product
- Unique "Water Dam" allows the Waterhog mat to hold up to 1½ gallons of water per square yard; water and dirt stay on the mat
- Anti-Static and certified slip resistant by National Floor Safety Institute
- Available with cleated backing for placement on carpet, smooth backing for hard floor surfaces, or Anchor Safe backing* for maximum movement control on hard surfaces
- Recommended for commercial buildings, hotels, restaurants, healthcare facilities, office buildings and more

SIZES

HALF OVAL	TWO ENDS
3' x 1.8'	3' x 7.1'
4' x 2.3'	3' x 11.7'
6' x 3.3'	3' x 15.5'
	3' x 19.4'
ONE END	3' x 23.2'
3' x 5.5'	4' x 8'
3' x 10'	4' x 12.6'
3' x 13.9'	4' x 16.5'
3' x 17.7'	4' x 20.3'
3' x 21.6'	6' x 10.1'
4' x 5.9'	6' x 14.8'
4' x 10.5'	6' x 18.6'
4' x 14.4'	6' x 22.4'
4' x 18.2'	
4' x 22'	
6' x 7'	
6' x 11.6'	
6' x 15.4'	
6' x 19.3'	
6' x 23.1'	

Sizes are approximate. See price list for additional sizes. Mats up to 40' are standard. Cleated backing and available in Smooth backing on request. Anchor Safe backing is available upon request on mats up to 20'. Mats over 40' are available only in Smooth backing.
*Note: Anchor Safe backing available with a 30% upcharge. This backing is .100 mil thick nitrile rubber.



170 black smoke

171 indigo

172 southern pine

173 grey ash

174 maroon

175 chestnut brown

176 khaki

177 regal red



www.mamattng.com



Waterhog Eco Grand Premier
One End
maroon



Waterhog Eco Grand Premier
Half Oval
southern pine



Waterhog Eco Grand Premier
Two Ends
chestnut brown

WATERHOG® ECO GRAND PREMIER

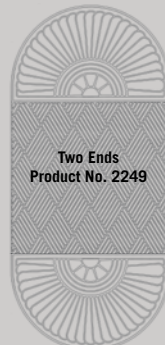
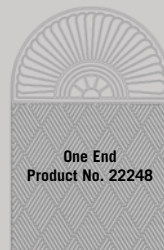
3/8" Half Oval: No. 2246 One End: No. 22248 Two Ends: No. 2249

- Earth friendly 30 oz/sq yd 100% post consumer recycled PET fabric reclaimed from plastic drink bottles
- SBR rubber backing contains 20% recycled rubber from car tires
- Bi-level surface effectively removes and stores dirt and moisture beneath shoe level between cleanings
- Rubber reinforced face nubs prevent pile from crushing, extending the performance life of the product
- Unique "Water Dam" allows the Waterhog mat to hold up to 1½ gallons of water per square yard; water and dirt stay on the mat
- Anti-Static and certified slip resistant by National Floor Safety Institute
- Available with cleated backing for placement on carpet, smooth backing for hard floor surfaces, or Anchor Safe backing* for maximum movement control on hard surfaces
- Recommended for commercial buildings, hotels, restaurants, healthcare facilities, office buildings and more

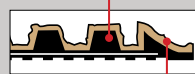
SIZES

HALF OVAL	TWO ENDS
3' x 1.8'	3' x 7.1'
4' x 2.3'	3' x 11.7'
6' x 3.3'	3' x 15.5'
	3' x 19.4'
ONE END	3' x 23.2'
3' x 5.5'	4' x 8'
3' x 10'	4' x 12.6'
3' x 13.9'	4' x 16.5'
3' x 17.7'	4' x 20.3'
3' x 21.6'	6' x 10.1'
4' x 5.9'	6' x 14.8'
4' x 10.5'	6' x 18.6'
4' x 14.4'	6' x 22.4'
4' x 18.2'	
4' x 22'	
6' x 7'	
6' x 11.6'	
6' x 15.4'	
6' x 19.3'	
6' x 23.1'	

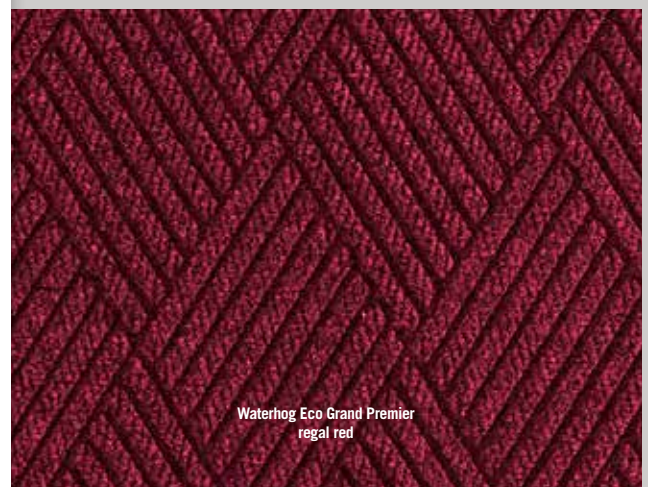
Sizes are approximate. See price list for additional sizes. Mats up to 40' are standard. Cleated backing and available in Smooth backing on request. Anchor Safe backing is available upon request on mats up to 20'. Mats over 40' are available only in Smooth backing.
*Note: Anchor Safe backing available with a 30% upcharge. This backing is .100 mil thick nitrile rubber.



Rubber reinforced textile



Fabric Border



Waterhog Eco Grand Premier
regal red



170 black smoke

171 indigo

172 southern pine

173 grey ash

174 maroon

175 chestnut brown

176 khaki

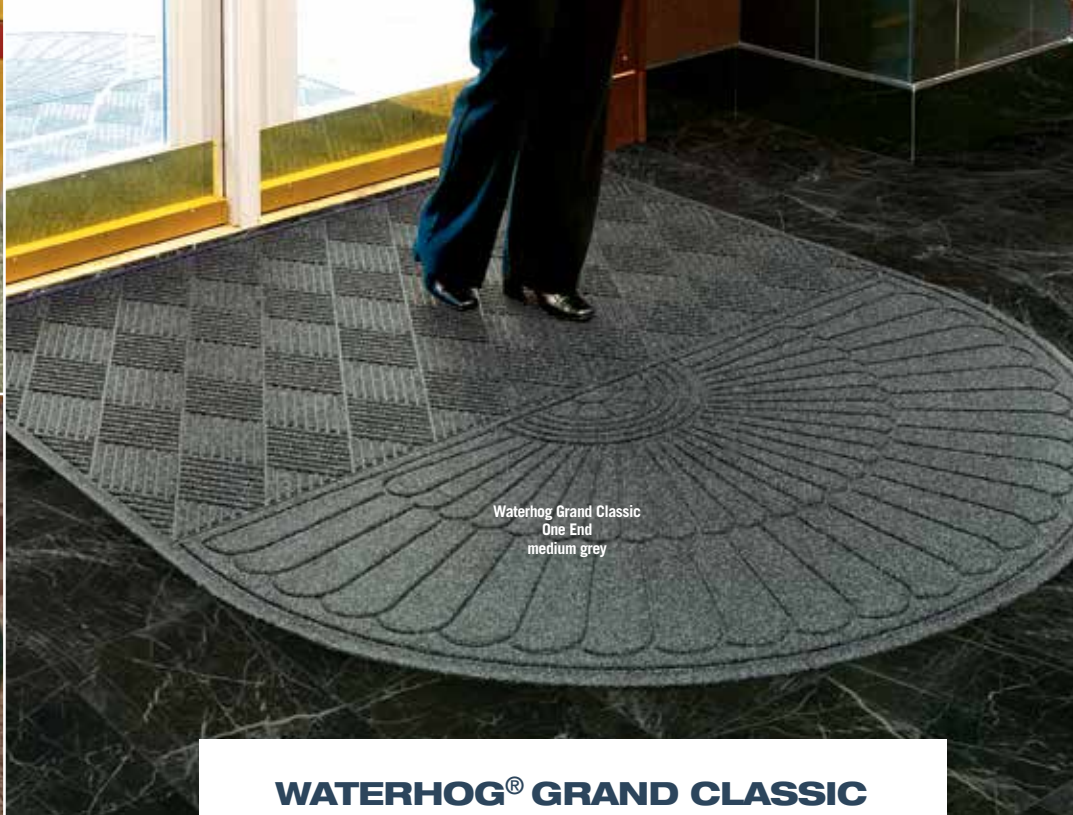
177 regal red



Waterhog Grand Classic
Half Oval
bordeaux



Waterhog Grand Classic
Two Ends
evergreen



Waterhog Grand Classic
One End
medium grey



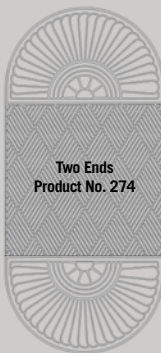
ENTRANCE/SCRAPER-WIPER/
INDOOR-OUTDOOR



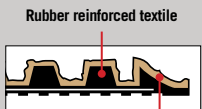
Half Oval
Product No. 272



One End
Product No. 273



Two Ends
Product No. 274



Fabric Border



Waterhog Grand Classic
dark brown

WATERHOG® GRAND CLASSIC

3/8" half oval: No. 272 one end: No. 273 two ends: No. 274

- 24 oz./yd. Polypropylene fiber system dries quickly and won't fade or rot
- Green friendly rubber backing has 20% recycled rubber content
- Exclusive rubber-reinforced face pattern prevents pile from crushing, extending performance life
- Unique ridged construction effectively removes and holds dirt & moisture below shoe level
- Exclusive "Water Dam" border allows Waterhog to trap dirt and water
- Available with cleated backing for placement on carpet, smooth backing for hard floor surfaces, or Anchor Safe backing* for maximum movement control on hard surfaces
- Anti-Static and certified slip-resistant by the National Floor Safety Institute
- Recommended for commercial buildings, hotels, restaurants, healthcare facilities, office buildings and more

SIZES

HALF OVAL	TWO ENDS
3' x 1.8'	3' x 7'
4' x 2.3'	3' x 11.7'
6' x 3.3'	3' x 15.5'
	3' x 19.4'
ONE END	3' x 23.2'
3' x 5.5'	4' x 8'
3' x 10'	4' x 12.6'
3' x 13.9'	4' x 16.5'
3' x 17.7'	4' x 20.3'
3' x 21.6'	6' x 10.1'
4' x 5.9'	6' x 14.8'
4' x 10.5'	6' x 18.6'
4' x 14.4'	6' x 22.4'
4' x 18.2'	
4' x 22'	
6' x 7'	
6' x 11.6'	
6' x 15.4'	
6' x 19.3'	
6' x 23.1'	

Sizes are approximate. See price list for additional sizes. Mats up to 40' are standard Cleated backing and available in Smooth backing on request. Anchor Safe backing is available upon request on mats up to 20'. Mats over 40' are available only in Smooth backing.

*Note: Anchor Safe backing available with a 30% upcharge. This backing is .100 mil thick nitrile rubber.



150 camel 151 medium brown 152 dark brown 153 light green* 154 charcoal 155 red/black 156 medium blue 157 medium grey 158 bluestone 159 evergreen



160 bordeaux 161 navy 162 white* 163 aquamarine* 164 gold* 165 solid red* 166 yellow* 167 orange* 168 purple*

*These colors are ONLY available in 3' and 4' widths.



www.mamattng.com



Waterhog Eco Elite
maroon

WATERHOG® ECO ELITE

3/8" Product No. 2240

WATERHOG® ECO ELITE FASHION

3/8" Product No. 2241

- Earth friendly 30 oz/sq yd 100% post consumer recycled PET fabric reclaimed from plastic drink bottles
- SBR rubber backing contains 20% recycled rubber from car tires
- Bi-level surface effectively removes and stores dirt and moisture beneath shoe level between cleanings
- Rubber reinforced face nubs prevent pile from crushing, extending the performance life of the product
- Unique "Water Dam" allows the Waterhog mat to hold up to 1½ gallons of water per square yard; water and dirt stay on the mat
- Anti-Static and certified slip resistant by National Floor Safety Institute
- Available with cleated backing for placement on carpet, smooth backing for hard floor surfaces, or Anchor Safe backing* for maximum movement control on hard surface
- Recommended for commercial buildings, hotels, restaurants, healthcare facilities, office buildings and more

SIZES

2' x 3'	4' x 10'
3' x 4'	4' x 12.2'
3' x 5'	4' x 16'
3' x 6'	4' x 20'
3' x 8.4'	6' x 6'
3' x 10'	6' x 8.4'
3' x 12.2'	6' x 12.2'
3' x 16'	6' x 16'
3' x 20'	6' x 20'
4' x 6'	
4' x 8.4'	

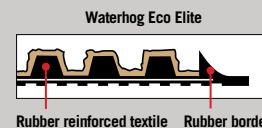
Sizes are approximate. See price list for additional sizes. Mats up to 40' are standard Cleated backing and available in Smooth backing on request. Anchor Safe backing is available upon request on mats up to 20'. Mats over 40' are available only in Smooth backing. ***Note:** Anchor Safe backing available with a 30% upcharge. This backing is .100 mil thick nitrile rubber.



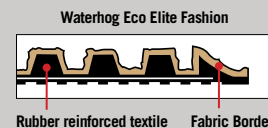
ENTRANCE/SCRAPER-WIPER/
INDOOR-OUTDOOR



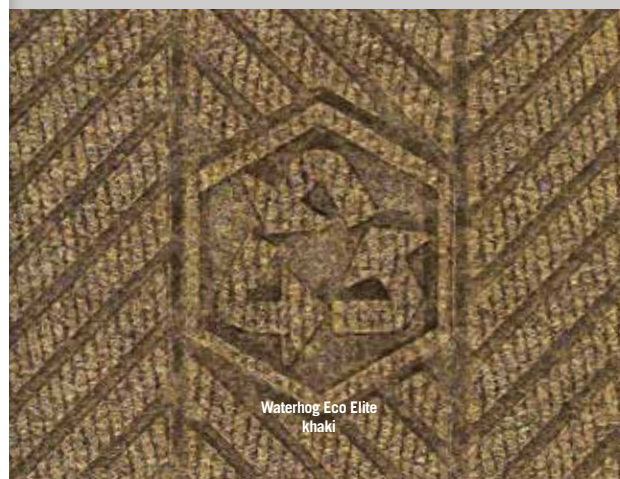
Waterhog Eco Elite Fashion
southern pine



Waterhog Eco Elite
Rubber reinforced textile Rubber border



Waterhog Eco Elite Fashion
Rubber reinforced textile Fabric Border



Waterhog Eco Elite
khaki



170 black smoke

171 indigo

172 southern pine

173 grey ash

174 maroon

175 chestnut brown

176 khaki

177 regal red



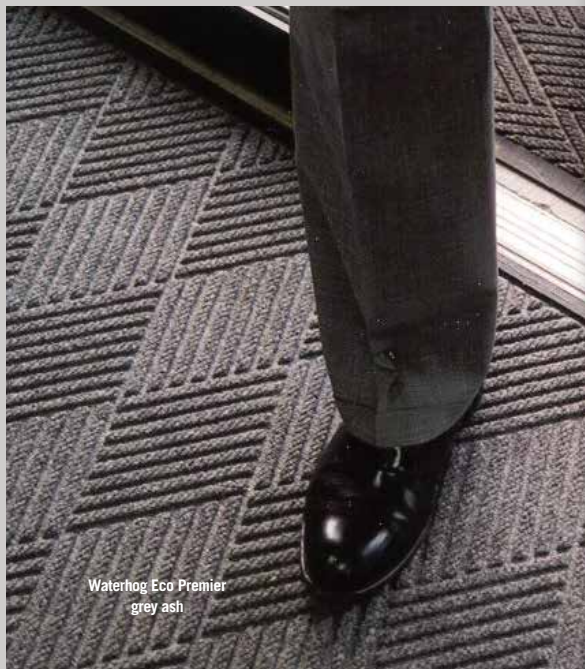
ENTRANCE/SCRAPER-WIPER/INDOOR-OUTDOOR

WATERHOG® ECO PREMIER

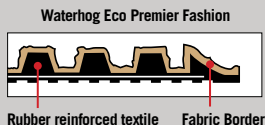
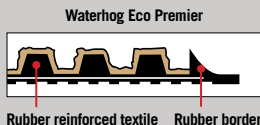
3/8" Product No. 2295

WATERHOG® ECO PREMIER FASHION

3/8" Product No. 2297



Waterhog Eco Premier
grey ash



- Earth friendly 30 oz/sq yd 100% post consumer recycled PET fabric reclaimed from plastic drink bottles
- SBR rubber backing contains 20% recycled rubber from car tires
- Bi-level surface effectively removes and stores dirt and moisture beneath shoe level between cleanings
- Rubber reinforced face nubs prevent pile from crushing, extending the performance life of the product
- Unique "Water Dam" allows the Waterhog mat to hold up to 1½ gallons of water per square yard; water and dirt stay on the mat
- Anti-Static and certified slip resistant by National Floor Safety Institute
- Available with cleated backing for placement on carpet, smooth backing for hard floor surfaces, or Anchor Safe backing* for maximum movement control on hard surfaces
- Recommended for commercial buildings, hotels, restaurants, healthcare facilities, office buildings and more

SIZES

2' x 3'	4' x 8.4'
3' x 4'	4' x 10'
3' x 5'	4' x 12.2'
3' x 6'	4' x 16'
3' x 8.4'	4' x 20'
3' x 10'	6' x 6'
3' x 12.2'	6' x 8.4'
3' x 16'	6' x 12.2'
3' x 20'	6' x 16'
4' x 6'	6' x 20'

Sizes are approximate. See price list for additional sizes. Mats up to 40' are standard. Cleated backing and available in Smooth backing on request. Anchor Safe backing is available upon request on mats up to 20'. Mats over 40' are available only in Smooth backing. *Note: Anchor Safe backing available with a 30% upcharge. This backing is .100 mil thick nitrile rubber.



LEGACY ECO

3/8" Product No. 2290

LEGACY ECO FASHION

3/8" Product No. 2291

- Same features as Waterhog Eco and Eco Fashion, only with a unique geometric pattern
- Recommended for commercial buildings, hotels, restaurants, healthcare facilities, office buildings and more

SIZES

2' x 3'	3' x 20'	4' x 20'
3' x 4'	4' x 4'	6' x 6'
3' x 5'	4' x 6'	6' x 8'
3' x 8'	4' x 8'	6' x 10'
3' x 10'	4' x 10'	6' x 12'
3' x 12'	4' x 12'	6' x 16'
3' x 16'	4' x 16'	6' x 20'

Sizes are approximate. Additional lengths up to 61'.



ENTRANCE/SCRAPER-WIPER/INDOOR-OUTDOOR



Legacy Eco Fashion
maroon





Waterhog Fashion
evergreen



Waterhog Classic
bordeaux

WATERHOG® CLASSIC

3/8" Product No. 200

WATERHOG® FASHION

3/8" Product No. 280

- 24 oz/sq yd solution dyed polypropylene fabric is highly stain resistant
- SBR rubber backing contains 20% recycled rubber from car tires
- Bi-level surface effectively removes and stores dirt and moisture beneath shoe level between cleanings
- Rubber reinforced face nubs prevent pile from crushing, extending the performance life of the product
- Unique "Water Dam" allows the Waterhog mat to hold up to 1½ gallons of water per square yard; water and dirt stay on the mat
- Anti-Static and certified slip resistant by National Floor Safety Institute
- Available with cleated backing for placement on carpet, smooth backing for hard floor surfaces, or Anchor Safe backing* for maximum movement control on hard surface
- Recommended for commercial buildings, hotels, restaurants, healthcare facilities, office buildings and more

SIZES

18" x 27"	4' x 8'
2' x 3'	4' x 10'
3' x 4'	4' x 12'
3' x 5'	4' x 16'
3' x 8'	4' x 20'
3' x 10'	6' x 8'
3' x 12'	6' x 12'
3' x 16'	6' x 16'
3' x 20'	6' x 20'
4' x 6'	

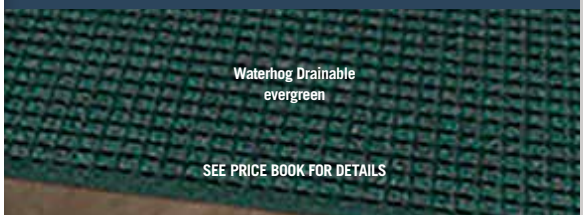
Sizes are approximate. See price list for additional sizes. Mats up to 40' are standard. Cleated backing and available in Smooth backing on request. Anchor Safe backing is available upon request on mats up to 20'. Mats over 40' are available only in Smooth backing.
*Note: Anchor Safe backing available with a 30% upcharge. This backing is .100 mil thick nitrile rubber.



ENTRANCE/SCRAPER-WIPER/
INDOOR-OUTDOOR

WATERHOG® DRAINABLE

3/8" Product No. 250



Waterhog Drainable
evergreen

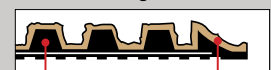
SEE PRICE BOOK FOR DETAILS

Waterhog Classic



Rubber reinforced textile Rubber border

Waterhog Fashion



Rubber reinforced textile Fabric Border



Waterhog Classic
bordeaux



150 camel 151 medium brown 152 dark brown 153 light green* 154 charcoal 155 red/black 156 medium blue 157 medium grey 158 bluestone 159 evergreen



160 bordeaux 161 navy 162 white* 163 aquamarine* 164 gold* 165 solid red* 166 yellow* 167 orange* 168 purple*

*These colors are available in 3' and 4' widths only.



ENTRANCE/SCRAPER-WIPER/
INDOOR-OUTDOOR

WATERHOG® CLASSIC DIAMOND

3/8" Product No. 208

WATERHOG® FASHION DIAMOND

3/8" Product No. 221



Waterhog Classic Diamond
red/black

- 24 oz/sq yd Polypropylene fiber system dries quickly and won't fade or rot
- Green friendly rubber backing has 20% recycled rubber content
- Exclusive rubber-reinforced face pattern prevents pile from crushing, extending performance life
- Unique ridged construction effectively removes and holds dirt & moisture below shoe level between cleanings
- Exclusive "Water Dam" border allows Waterhog to trap dirt and water
- Available with cleated backing for placement on carpet, smooth backing for hard floor surfaces, or Anchor Safe backing* for maximum movement control on hard surfaces
- Certified slip-resistant by the National Floor Safety Institute
- Recommended for commercial buildings, hotels, restaurants, healthcare facilities, office buildings and more

SIZES

2' x 3'	4' x 8.4'
3' x 4'	4' x 10'
3' x 5'	4' x 12.2'
3' x 6'	4' x 16'
3' x 8.4'	4' x 20'
3' x 10'	6' x 6'
3' x 12.2'	6' x 8.4'
3' x 16'	6' x 12.2'
3' x 20'	6' x 16'
4' x 6'	6' x 20'

Sizes are approximate. See price list for additional sizes. Mats up to 40' are standard Cleated backing and available in Smooth backing on request. Anchor Safe backing is available upon request on mats up to 20'. Mats over 40' are available only in Smooth backing. ***Note:** Anchor Safe backing available with a 30% upcharge. This backing is .100 mil thick nitrile rubber.



*These colors are ONLY available in 3' and 4' widths.



LEGACY CLASSIC

3/8" Product No. 201

LEGACY FASHION

3/8" Product No. 202

- Same features as Waterhog Classic and Fashion, only with a unique geometric pattern
- Recommended for commercial buildings, hotels, restaurants, healthcare facilities, office buildings and more

SIZES

2' x 3'	3' x 20'	4' x 20'
3' x 4'	4' x 4'	6' x 6'
3' x 5'	4' x 6'	6' x 8'
3' x 8'	4' x 8'	6' x 10'
3' x 10'	4' x 10'	6' x 12'
3' x 12'	4' x 12'	6' x 16'
3' x 16'	4' x 16'	6' x 20'

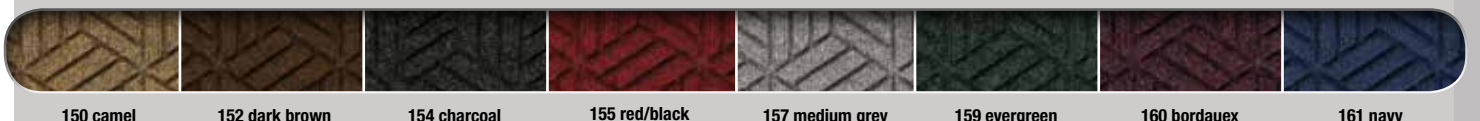
Sizes are approximate. Additional lengths up to 61'.



ENTRANCE/SCRAPER-WIPER/
INDOOR-OUTDOOR



Legacy Classic
navy



www.mamattin.com

WATERHOG® ECO ELITE ROLL GOODS

3/8" Product No. 2271* and 2272**

- Environmentally friendly matting solution is made with 100% post-consumer recycled PET Polyester fiber derived from used plastic bottles
- Rubber backing contains 20% post-consumer recycled tires. Available with smooth backing only.
- Permanently reinforced bi-level Waterhog construction effectively allows dirt and moisture to be filtered at the door and contained in the base of the mat, away from foot traffic
- Every square foot of a Waterhog Eco mat eliminates 4 half liter plastic bottles from the waste stream
- May be purchased pre-seamed and bordered or rolls may be purchased separately and installed on site
- Great for large entrances and custom cut applications in sizes up to 12' x 50'

*CUSTOM SIZES

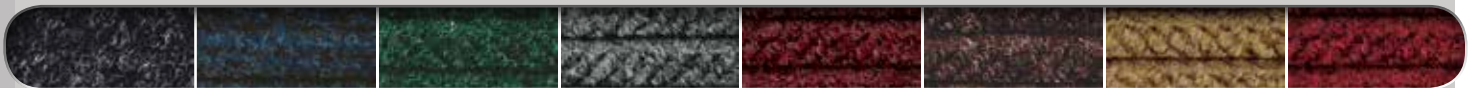
See price list for additional information.

**ROLL SIZE

(Does not include nosing)
6' x 67'



ENTRANCE/SCRAPER-WIPER/
INDOOR-OUTDOOR



170 black smoke

171 indigo

172 southern pine

173 grey ash

174 maroon

175 chestnut brown

176 khaki

177 regal red



ENTRANCE/SCRAPER-WIPER/INDOOR-OUTDOOR



BERBER ROLL GOODS

3/8" Roll Goods

Product No. 2281

3/8" Roll Goods, custom sizes

Product No. 2282

- Heavy needle punched fabric has 52 oz/sq yd face weight
- High performance rubber backing
- Polypropylene fabric is naturally stain resistant and easy to clean
- Solution dyed for excellent light & wet fastness
- 17 colors to choose from
- Great for large entrance area installations and custom size applications

ROLL SIZES

(Does not include nosing)
6' x 125'
12' x 125'

CUSTOM SIZES

available in 3' to 12' widths in sizes up to 12' x 50'. Widths over 6' may be seamed based on material availability. See price list for additional information. Sizes are approximate.



87 gold

84 dark brown*

80 bright red

85 dark green

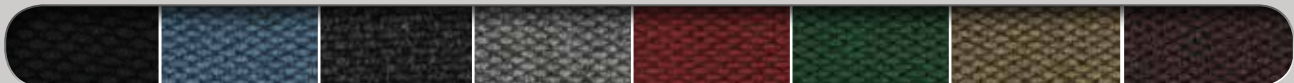
91 orange

83 dark blue*

92 purple

90 light yellow

96 white



94 solid black

89 light blue

82 charcoal*

88 grey*

95 solid red

86 emerald green

93 sand*

81 burgundy

*Available in 12' widths without a seam upon request



WATERHOG® CLASSIC TILE

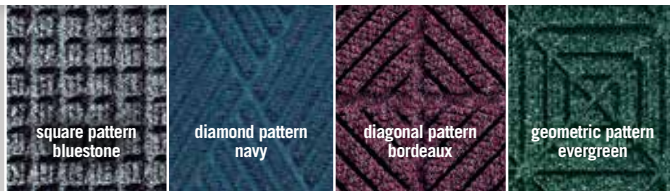
1/4" and 7/16"

No. 210-square, No. 216-diamond, No. 219-diagonal, No. 220-geometric

- Offers the same outstanding cleaning performance and benefits as the Waterhog Classic mat
- Premium 24-ounce anti-static, 100% polypropylene fiber system with SBR rubber backing
- 18" x 18" tiles
- Classic square, diamond, diagonal or geometric pattern
- Designed to be installed in high-traffic areas such as entrances, recessed mat wells, lobbies, vestibules and elevators

SIZE

18" x 18"



Waterhog Classic Tile
geometric pattern
dark brown



ENTRANCE/SCRAPER-WIPER/INDOOR



Waterhog Eco Premier Tile
diamond pattern
regal red

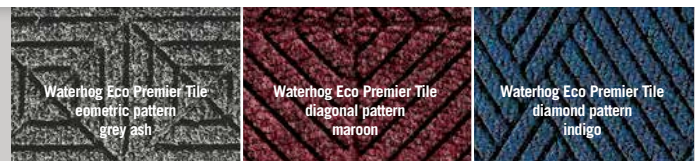
WATERHOG® ECO PREMIER TILE

1/4" or 7/16"	Product No. 2215	Geometric
1/4" or 7/16"	Product No. 2217	Diagonal
1/4" or 7/16"	Product No. 2218	Diamond

- 30 oz, 100% post-consumer recycled PET Polyester fiber derived from used plastic bottles for the face with a SBR rubber backing
- 18" x 18" tiles
- Diagonal, diamond or geometric pattern. Each pattern may be special ordered with the universal recycle symbol molded into the pattern.
- Permanent rubber reinforced bi-level face will not crush. Provides years of superior dirt and moisture collection.
- Modular flexibility to handle small to large entrances

SIZE

18" x 18"



Waterhog Eco Premier Tile
geometric pattern
grey ash

Waterhog Eco Premier Tile
diagonal pattern
maroon

Waterhog Eco Premier Tile
diamond pattern
indigo



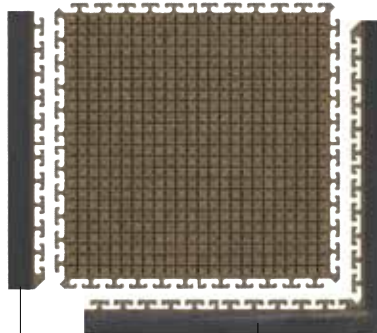


Waterhog Modular Tile Square camel

WATERHOG® MODULAR TILE SQUARE

7/16" Product No. 2210

- Cover large areas with this modular flooring entrance system without gluing in place. Professional flooring installer is not needed to install this system.
- 18"x 18" and 36"x 36" modular tiles link together easily
- Tapered rubber borders
- Side and corner borders securely link to outer perimeter of the installation
- Modular tiles can be cut in place if necessary
- Rubber reinforced bi-level cleaning surface provides long term cleaning performance
- Polypropylene face fabric is anti-static, stain resistant, fast drying and won't fade or rot
- Designed for high traffic entrances, recessed entrance areas, lobbies, vestibules and elevators in class a buildings, schools, hospitals, hotels, restaurants and other commercial establishments



side border

corner border

SIZES

18" x 18" x 7/16"	36" x 36" x 7/16"
18" Side Border	36" Side Border
18" Corner Border	36" Corner Border



ENTRANCE/SCRAPER-WIPER/
INDOOR-OUTDOOR



150 camel 151 medium brown 152 dark brown 153 light green 154 charcoal 155 red/black 156 medium blue 157 medium grey 158 bluestone 159 evergreen 160 bordeaux 161 navy

WATERHOG® FORKLIFT

3/8" Product No. 1253
3" x 108" Roll Double Sided Tape Product No. 1049

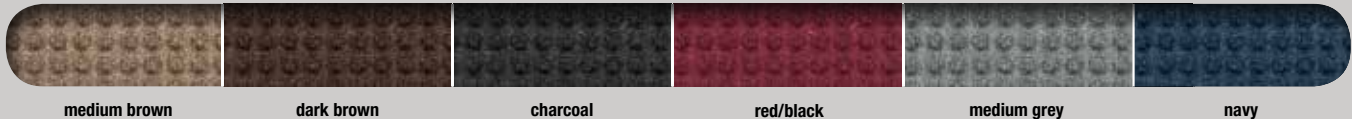
- Bi-level surface effectively removes moisture and dirt from forklift wheels to improve forklift safety
- Modular mats are easy to install and scalable for the application
- Aggressive adhesive taping system keeps tiles from moving (tape sold separately)
- Polypropylene carpet is easy to clean and fast drying
- Made in the USA
- Durable rubber backing and polypropylene carpet top withstands lift truck traffic up to 14,000 lbs
- Recommended for all buildings where forklifts must enter and exit a building to and from the outside

SIZE

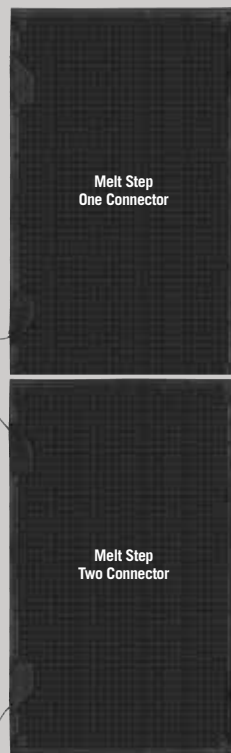
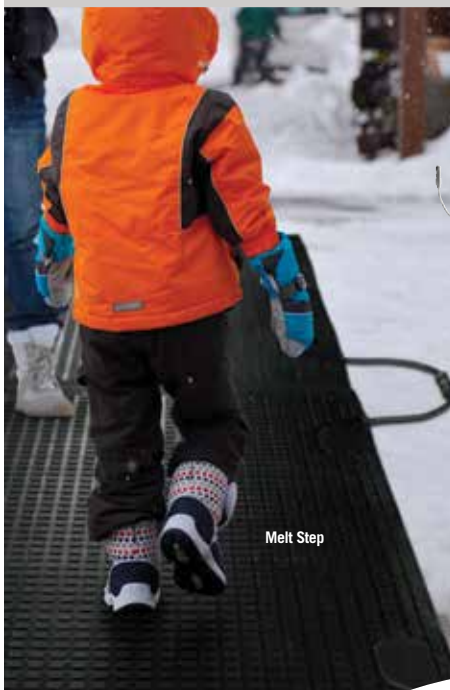
4' x 6'
Sizes are approximate.



SLIP RESISTANT/WET ENVIRONMENTS/INDOOR-OUTDOOR



SLIP RESISTANT/WET ENVIRONMENTS
OUTDOOR



MELT STEP™

3/8" One Connector Product No. 886
3/8" Two Connector Product No. 887
Accessories Product No. 889

- A convenient and reliable solution for melting snow and ice from walkways to prevent slip and fall accidents
- Unique reversible design permits electrical connection on right or left side of walkway
- Water proof electrical connection system with GFCI switch prevents electrical shock hazard
- 6' power cord (120 volts) with GFCI switch as well as a 6' extension cord are both sold separately
- Up to 4 mats can be connected in sequence
- Durable molded nitrile rubber construction is water proof, UV resistant, and flexible in freezing temperatures

SIZE

3' x 5'
Sizes are approximate.

ACCESSORIES



SUPERSCAPE™

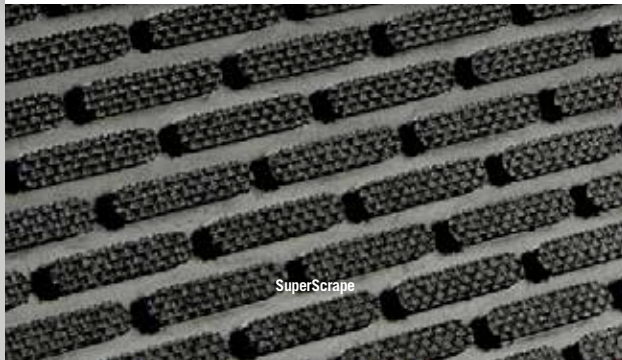
3/16" Product No. 5555

- Durable 100% nitrile rubber mat provides slip-resistant surface
- Molded tread-surface face cleats effectively scrape tough dirt and grime off shoes
- Perfect for use outside of entrances as a scraper mat or as a slip resistant mat in wet areas
- Certified high traction by the National Floor Safety Institute (NFSI)

SIZES

2'6" x 3'
3' x 5'
3' x 10'
4' x 6'
4' x 8'
6' x 6'
6' x 8'

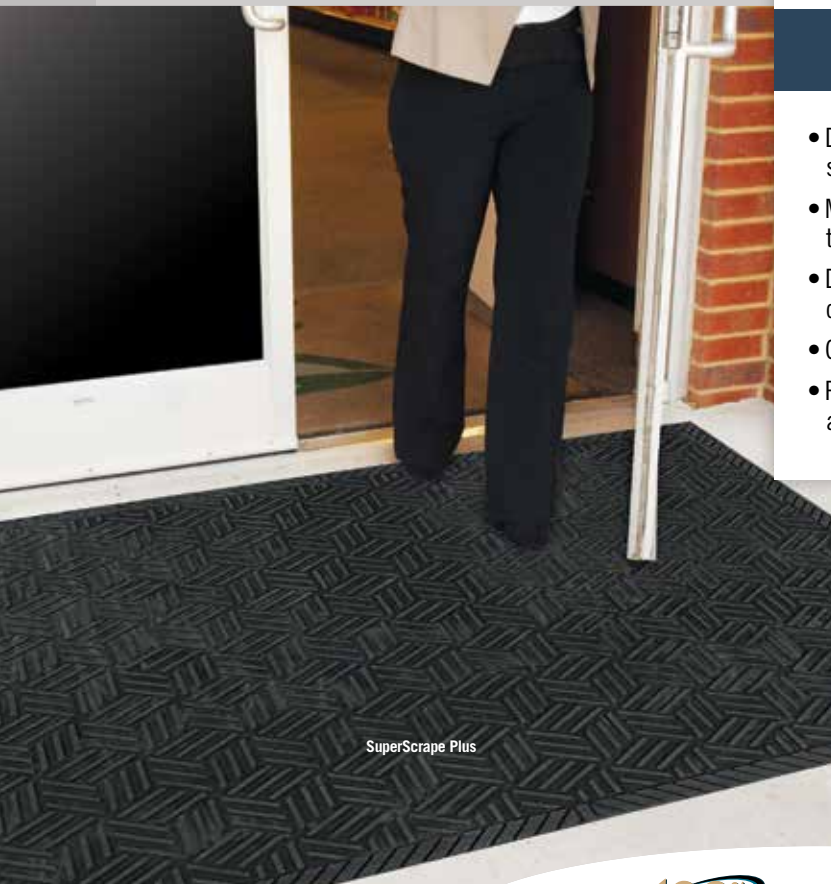
Sizes are approximate.



ENTRANCE/SCRAPER/
INDOOR-OUTDOOR



INTERIOR-EXTERIOR/SCRAPER



SUPERSCAPE™ PLUS

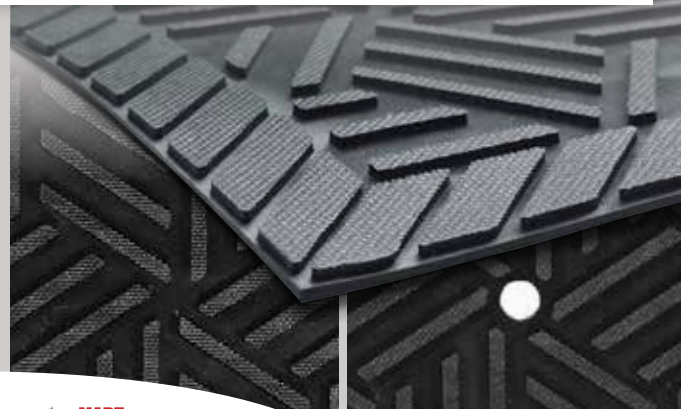
3/16" without holes Product No. 5558
3/16" with holes Product No. 5559

- Durable 100% nitrile rubber mat provides slip-resistant surface
- Multi-directional molded tread pattern effectively scrapes tough dirt and grime off shoes
- Drainable border filters water off the mat. Available with or without holes.
- Grease proof
- Perfect for use outside of entrances as a scraper mat or as a slip resistant mat in wet areas

SIZES

2'6" x 3'
3' x 5'
3' x 10'
4' x 6'

Sizes are approximate.



WATERHOG® DIAMONDCORD

3/8" Product No. 296

- 26 oz Corduroy berber look offers the ultimate in aesthetic appeal
- Manufactured with a permanent rubber reinforced bi-level face that minimizes crushing to provide dirt and moisture collection
- Thick and fine Polypropylene fibers wipe and scrape at the same time
- Rubber backing is 20% post-consumer recycled tire content
- Rubber water dam border keeps moisture and dirt from migrating off the mat
- Available with cleated backing for placement on carpet, smooth backing for hard floor surfaces, or Anchor Safe backing* for maximum movement control on hard surfaces
- Ideal choice for medium traffic placements

SIZES

2' x 3' 4' x 6'
3' x 4' 4' x 8.4'
3' x 5' 4' x 10'
3' x 6' 6' x 6'
3' x 8.4' 6' x 8.4'
3' x 10'

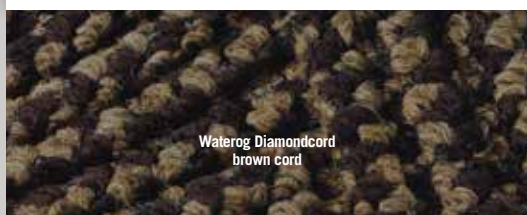
Sizes are approximate. See price list for additional sizes. Mats up to 40' are standard Cleated backing and available in Smooth backing on request. Anchor Safe backing is available upon request on mats up to 20'. Mats over 40' are available only in Smooth backing.
***Note:** Anchor Safe backing available with a 30% upcharge. This backing is .100 mil thick nitrile rubber.



ENTRANCE/SCRAPER-WIPER/
INDOOR



Waterhog Diamondcord
brown cord



Waterhog Diamondcord
brown cord



180 charcoal cord



181 green cord



182 grey cord



183 brown cord



ENTRANCE/SCRAPER-WIPER/
INDOOR



Waterhog Masterpiece Select
mauve

WATERHOG® MASTERPIECE SELECT

3/8" Product No. 265

- Construction provides a rubber reinforced bi-level surface for long-term service
- 28 oz Polypropylene face and a SBR rubber backing with 20% post-consumer recycled tire content
- Rubber water dam border keeps moisture and dirt from migrating off the mat
- Available with cleated backing for placement on carpet, smooth backing for hard floor surfaces, or Anchor Safe backing* for maximum movement control on hard surfaces
- Ideal choice for medium traffic placements

SIZES

2' x 3' 4' x 6'
3' x 4' 4' x 8'
3' x 5' 4' x 10'
3' x 8' 6' x 8'
3' x 10'

Sizes are approximate. See price list for additional sizes. Mats up to 40' are standard Cleated backing and available in Smooth backing on request. Anchor Safe backing is available upon request on mats up to 20'. Mats over 40' are available only in Smooth backing.
***Note:** Anchor Safe backing available with a 30% upcharge. This backing is .100 mil thick nitrile rubber.



230 ocean wave

231 nutmeg

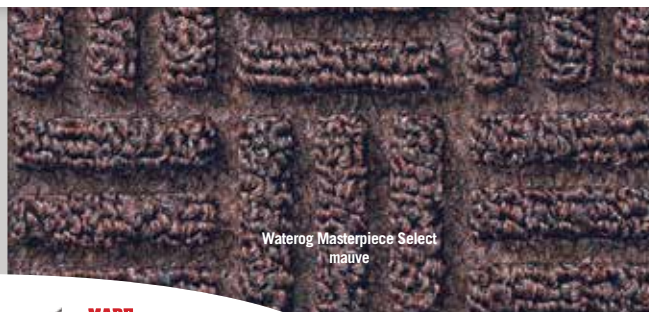
232 mauve



233 pewter

234 smoky teal

235 thunderstorm



Waterhog Masterpiece Select
mauve

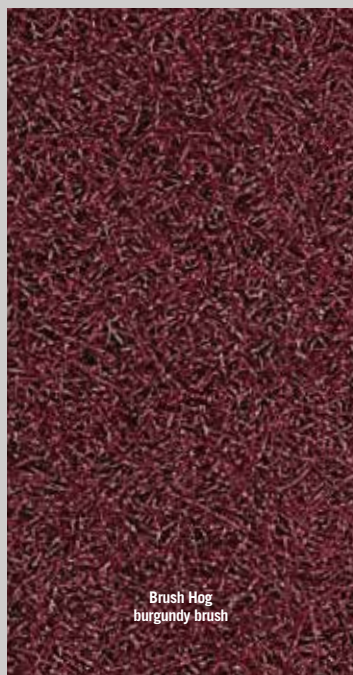




Brush Hog Plus
burgundy brush



ENTRANCE/SCRAPER/OUTDOOR



Brush Hog
burgundy brush



Brush Hog Plus
burgundy brush
Classic square pattern w/drainable fabric borders

BRUSH HOG™

3/8" Product No. 395

BRUSH HOG™ PLUS

3/8" Product No. 385

- 100% high performance solution dyed nylon face won't fade in sunlight
- Green Friendly rubber backing has 20% post consumer recycled car tire content. You may choose from Smooth or Cleated backings
- Turf pile fabric construction of both Brush Hog Plus and Brush Hog filters dirt and moisture away from the mat surface. Brush Hog Plus mats have the added feature of bi-level reinforced rubber construction for improved filtration performance
- Drainable borders
- Recommended for outside applications for all commercial buildings
- Brush Hog and Brush Hog Plus mats are certified Slip resistant by the National Floor Safety Institute

BRUSH HOG SIZES

2' x 3'	4' x 8'
3' x 4'	4' x 10'
3' x 5'	4' x 12'
3' x 6'	4' x 16'
3' x 8'	4' x 20'
3' x 10'	6' x 8'
3' x 12'	6' x 12'
3' x 16'	6' x 16'
3' x 20'	6' x 20'
4' x 6'	

Additional lengths up to 60'. See price list for all additional sizes.

BRUSH HOG PLUS SIZES

2' x 3'	4' x 6'
3' x 5'	4' x 8'
3' x 10'	5.4' x 8'

Sizes are approximate.



301 charcoal brush

302 navy brush

303 brown brush

304 burgundy brush

305 green brush

FLEX TIP™

5/8" Product No. 874

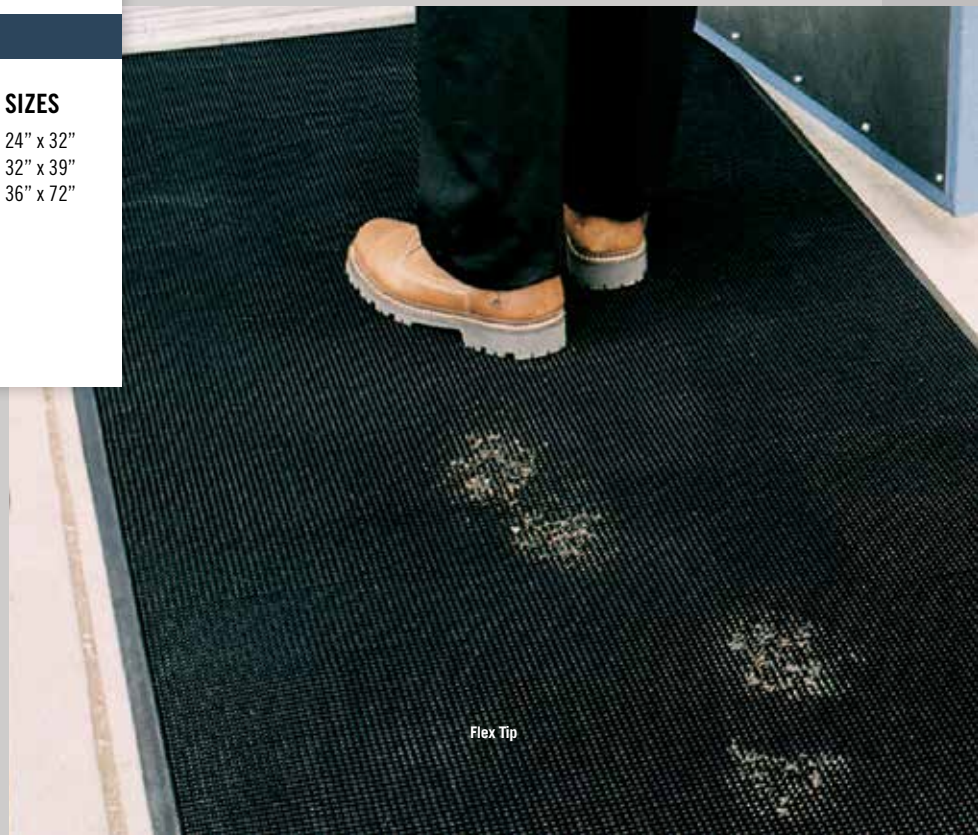
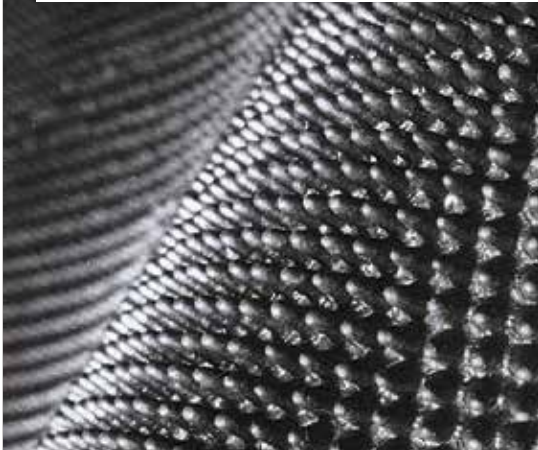
- Two thousand finger-like tips/sq. ft (21,000/m²) aggressively scrape soil from shoes
- Excellent for outdoor use
- OSHA-compliant beveled edges and deep wells hold heavy soil and debris
- Has excellent anti-fatigue capabilities
- Easily cleaned by hosing off or shaking

SIZES

24" x 32"
32" x 39"
36" x 72"



ENTRANCE/SCRAPER/OUTDOOR



Flex Tip



ENTRANCE/SCRAPER/OUTDOOR



Frontier
brown

FRONTIER

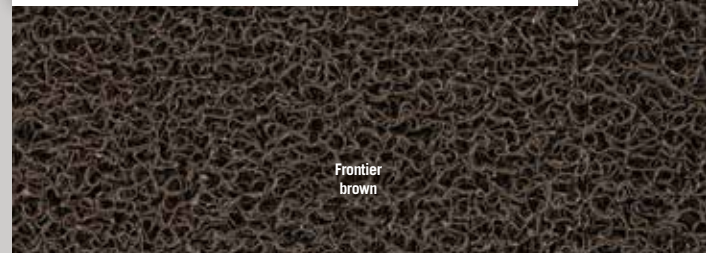
3/8" Product No. 437

- Unbacked vinyl loop scraper mat
- Filters dirt and water at the door
- Use in locker rooms, showers and around pools
- Order with or without edging

SIZES

2' x 3' 4' x 8'
3' x 5' 3' x 60'
3' x 10' 4' x 60'
4' x 6'

Sizes are approximate.
Additional lengths up to 60' in 3' and 4' widths



Frontier
brown



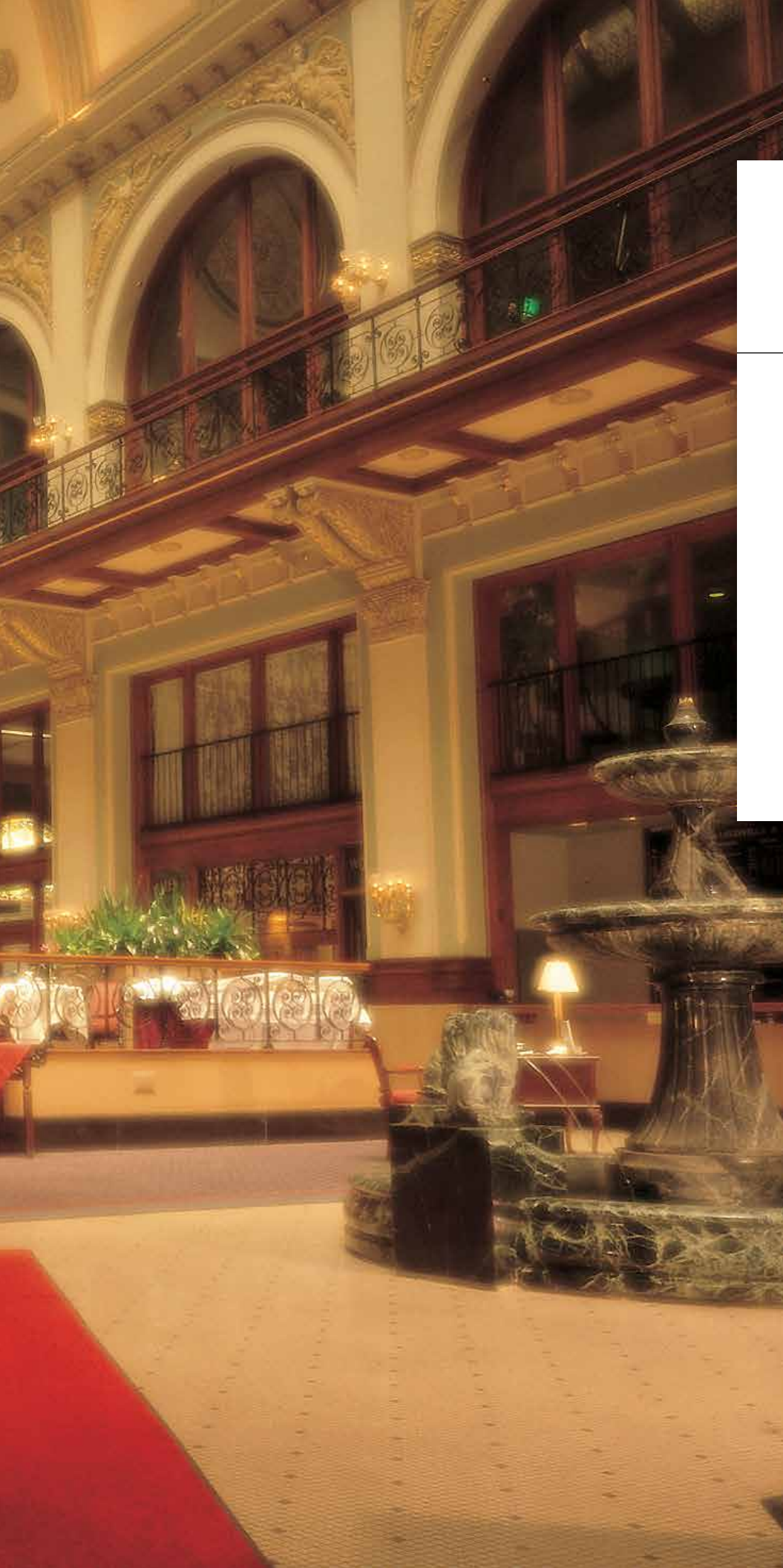
1 dark grey

2 brown

3 blue







M + A MATTING

INTERIOR MAT COLLECTION

SURE STRIDE®

SURE STRIDE® PLUSH

CLEANSHIELD® URINAL MAT

CLEAN STRIDE®

ENVIRO PLUS®

TRI-GRIP™

TRI-GRIP XL™

GREASE HOG™

MICROLUX™

PLUSH™

IMPRESSIONIST

VICTORY

COBBLESTONE

SURE STRIDE®

3' x 100' Roll
Cutting Board
Cutting Knife

Product No. 4450
Product No. 4459
Product No. 4460

- **Keeps Floors Dry** – retains up to 1 gallon of water per 10 linear feet (25% more than competitive products); moisture barrier keeps liquids from soaking through to the floor
- **Stays in Place** – tacki-back adhesive system keeps mat flat and in place, even with cart and buggy traffic
- **Quick & Easy to Install** – cut individual mats as needed from the roll
- **Easy to Clean** – polypropylene fabric (10 oz.) is durable and easy to clean
- **Safe** – certified high-traction by the National Floor Safety Institute (NFSI)
 - Will perform up to 3 months under normal use

SIZE

3' x 100'
roll



INDOOR/SLIP-RESISTANT



SureStride smoke

FREE
CUTTING
KNIFE with
Each Roll!



SureStride smoke

Cutting Knife

Cutting Board
(sold separately)

Tacki Back



INDOOR/SLIP-RESISTANT

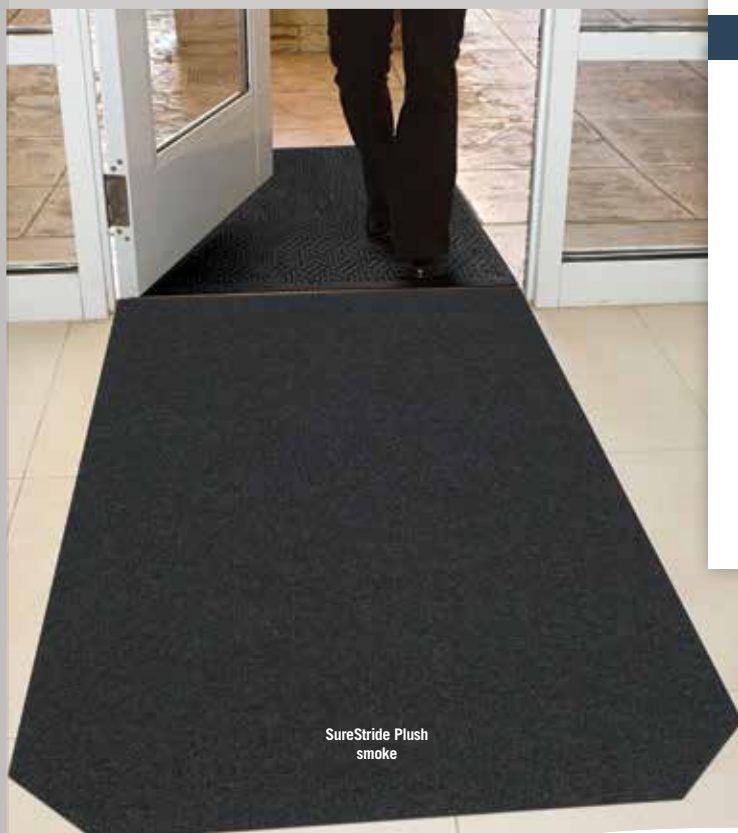
SURE STRIDE® PLUSH

Product No. 4457

- **Keeps Floors Dry** – retains more than 1 gallon of water per 10 linear feet; moisture barrier keeps liquids from soaking through to the floor
- **Stays in Place** – tacki-back adhesive system keeps mat flat and in place, even with wheelchair, cart, and buggy traffic
- **Anti-microbial** – fabric is treated with an anti-microbial agent to help prevent odors
- **Quick & Easy to Install** – cut individual mats as needed from the roll
- **Easy to Clean** – recycled PET fabric (15 oz.) is durable and easy to clean
- **Safe** – certified high-traction by the National Floor Safety Institute (NFSI)
 - Will perform for 3 to 6 months under normal use

SIZE

3' x 30'
roll



SureStride Plush
smoke



SureStride Plush
smoke



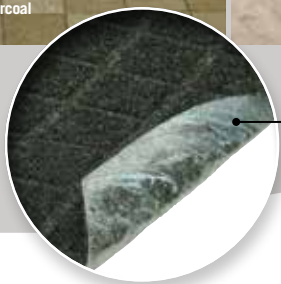
FLOOR PROTECTION/SLIP RESISTANT/WET ENVIRONMENTS/INDOOR



CleanShield® Urinal Mat charcoal



CleanShield® Commode Mat charcoal



Seep Guard Tacki Back

100%
customer satisfaction
GUARANTEED

NFSI
HIGH-TRACTION

MADE
IN THE
USA

CLEANSHIELD® URINAL & COMMODE MATS

with Seep Guard Tacki Back

Urinal No. 4065

Commode No. 4055



Timestrip®

- Anti-Microbial Treated to reduce odors
- Seep Guard Tacki Back eliminates urine seepage to the floor while keeping mat in place
- Easy to read 30 day Timestrip® indicates when it is time to replace the mat
- 100% eco friendly post-consumer recycled PET fabric with attractive diamond pattern
- Improves bathroom appearance by protecting the floor & grout from uric acid damage

SIZES

17.25" x 20.5"
21.75" x 22.75"

CLEAN STRIDE®

3/8" frame only
3/8" frame with carpet
inserts

Product No. 410
Product No. 411
Product No. 412

- Earth-friendly SBR rubber backing has 20% recycled rubber content. Available in smooth or cleated backing.
- Not recommended for wet areas
- As foot traffic passes over the mat, the WaterHog™ surface scrapes larger particles while the adhesive insert captures smaller dust & dirt. With two footsteps on Clean Stride® adhesive insert, over 90% of dirt particles are removed.
- Clean Stride® mats provide highly effective dirt and dust removal methods for factories, computer rooms, warehouses, school gymnasiums, health care facilities and more

RUBBER FRAME SIZES

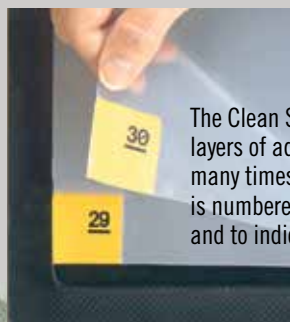
26.5" x 32"
36.5" x 46"

CARPET/ RUBBER FRAME SIZES

26.5" x 63.5"
36.5" x 92.5"
Clean Stride®
Mat Frames **do**
not include Clean
Stride® Inserts

INSERT SIZES

24" x 30"
34" x 44"



The Clean Stride® adhesive insert is comprised of 60 layers of adhesive coated film. Each layer will perform many times before it must be peeled away. Each layer is numbered to ensure one sheet at a time removal and to indicate the number of layers remaining.



Clean Stride Frame with Carpet
red/black



SCRAPER-WIPER/
INDOOR



150 camel 151 medium brown 152 dark brown 153 light green 154 charcoal 155 red/black 156 medium blue 157 medium grey 158 bluestone 159 evergreen



160 bordeaux 161 navy 162 white 163 aquamarine 164 gold 165 solid red 166 yellow 167 orange 168 purple

100%
customer satisfaction
GUARANTEED

MADE
IN THE
USA

www.mamattin.com



WIPER/INDOOR



ENVIRO PLUS®

1/4" Product No. 2202

- Earth friendly 30 oz/sq yd 100% post consumer recycled PET fabric reclaimed from plastic drink bottles
- Backing is post-consumer recycled tires and EPDM (post-industrial waste rubber); smooth backing only
- Recycled content is 89% of total product weight (76% post-consumer, 13% post-industrial)
- Effective as a wiper mat in entryways. Also use for floor protection and spill control at water fountains, break areas, food counters, hallways, labs and more
- Anti-static
- Recommended for commercial buildings, hotels, restaurants, healthcare facilities, office buildings and more

SIZES

2' x 3'	4' x 10'
3' x 4'	4' x 12'
3' x 5'	4' x 16'
3' x 8'	4' x 20'
3' x 10'	6' x 8'
3' x 12'	6' x 12'
3' x 16'	6' x 16'
3' x 20'	6' x 20'
4' x 6'	
4' x 8'	

Sizes are approximate. Additional lengths up to 60'. See price list for all additional sizes.



170 black smoke

171 indigo

172 southern pine

173 grey ash

174 maroon

175 chestnut brown

176 khaki

177 regal red

TRI-GRIP™/CLASSIC™ MATS/ CLASSIC™ CARPETS

3/16" Product No. 100

Colors 101, 102, 103, 109, 111, 113, 114, 116, 119, 121, 128, 129, 132, 141 on SBR rubber

3/16" Product No. 190

Colors 105, 125, 126, 127, 131 on SBR rubber

Vinyl back available as Stylist: Product No. 872

TRI-GRIP™ XL

3/16" Product No. 2100 on nitrile rubber

- Heavy, 100% static dissipative nylon face offers outstanding absorption and durability
- Tight, heat-set, Ultra-Twist™ yarn construction resists packing and crushing
- Earth friendly SBR rubber backing has 20% recycled content. Resists curling and cracking.
- Also available with oil and grease resistant nitrile rubber backing
- Available with cleated backing for placement on carpet or smooth backing for hard floor surfaces. Cleated backing available in 3', 4' and 5' widths only.
- Certified high-traction by the National Floor Safety Institute (NFSI)

SIZES

2' x 3'
3' x 4'
3' x 5'
3' x 6'
3' x 8'
3' x 10'
4' x 6'
4' x 8'
4' x 10'

Additional lengths up to 40'. See price list for all additional sizes.

XL SIZES

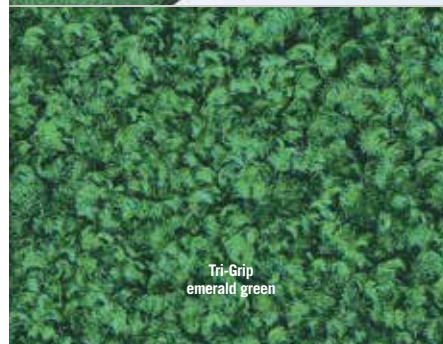
7'- 12' widths are available in lengths up to 30'. See price list for all additional sizes. Sizes are approximate.



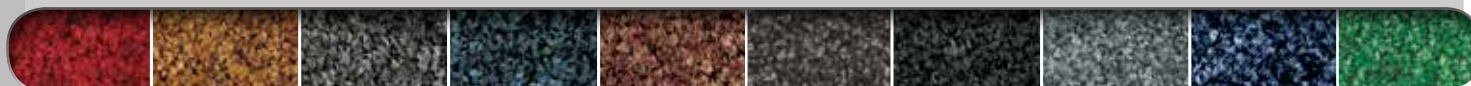
WIPER/INDOOR



Tri-Grip
emerald green



Tri-Grip
emerald green



101 red/black**

102 browntone**

103 cabot grey**

105 dark granite**

109 chocolate*

111 grey

113 charcoal**

114 platinum*

116 navy*

119 emerald green



121 solid red*

125 midnight blue*

126 autumn brown

127 burgundy berry*

128 steel blue

129 glen green

131 stardust grey

132 suede

141 cranberry

*5' widths available

**5' and 6' widths available





SCRAPER-WIPER/INDOOR

GREASE HOG™

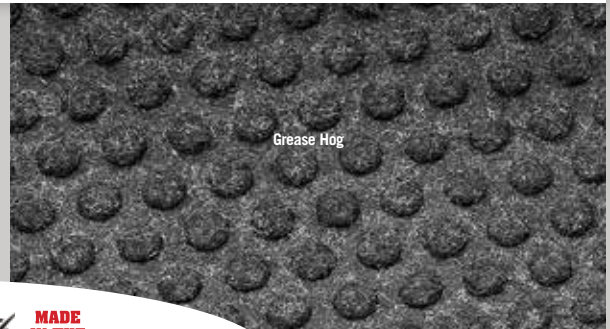
1/4" Product No. 883

- Solution-Dyed polypropylene fabric will not fade or rot
- Grease proof nitrile rubber backing
- Permanently molded bi-level pattern on the carpet surface provides an anti-slip surface
- Easy to clean and dry
- Low profile reinforced borders allow carts to cross easily
- Unique disk pattern on back of mat keeps it in place on hard floor surfaces. Available with cleated backing for carpeted surfaces.
- Use in transitions from kitchens to dining areas and plants to office areas to stop tracked in grease and oil

SIZES

3' x 5'
3' x 10'

Sizes are approximate.



MICROLUX™

Product No. 1201

The MicroLux mat features traditional nylon fibers blended with finer denier fibers that work together to absorb high levels of dirt and moisture.

- **Superior dust and moisture control** - absorbs and retains 2.5 times more moisture than standard carpeted mats
- **Fade resistant** - solution-dyed nylon won't fade in sunlight or with repeated washing; impervious to bleach
- **Safe** - beveled edges provide a safe transition from mat to floor; certified high-traction by the National Floor Safety Institute
- **Durable nitrile rubber backing** (available in 52, 65, or 90 mil)

SIZES

2' x 3'
2.5' x 3'
2.5' x 4'
3' x 4'
3' x 5'
3' x 10'
4' x 6'
4' x 8'
5' x 8'
5' x 10'
5' x 12'
6' x 8'
6' x 10'
6' x 12'

Custom sizes up to 40'
Sizes are approximate.



WIPER/INDOOR



Brown/Black



Slate Grey



Black



Midnight Grey



Blue/Black



Red Pepper



PLUSH™



WIPER/INDOOR

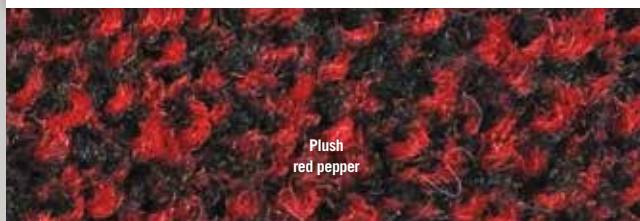
7/16" Product No. 180

- Heavy, 36 oz./sq. yd. nylon face creates the ultimate wiping surface
- Double thick nitrile rubber backing keeps mat stable, even with cart traffic
- Solution dyed nylon face will not fade over time
- Available with grippers for placement on carpeted surfaces and smooth backing for hard surfaces
- Can be machine washed and dried or vacuumed and extraction cleaned
- Perfect for use in grocery stores, airports, educational facilities, Class A buildings or any high traffic entrance way

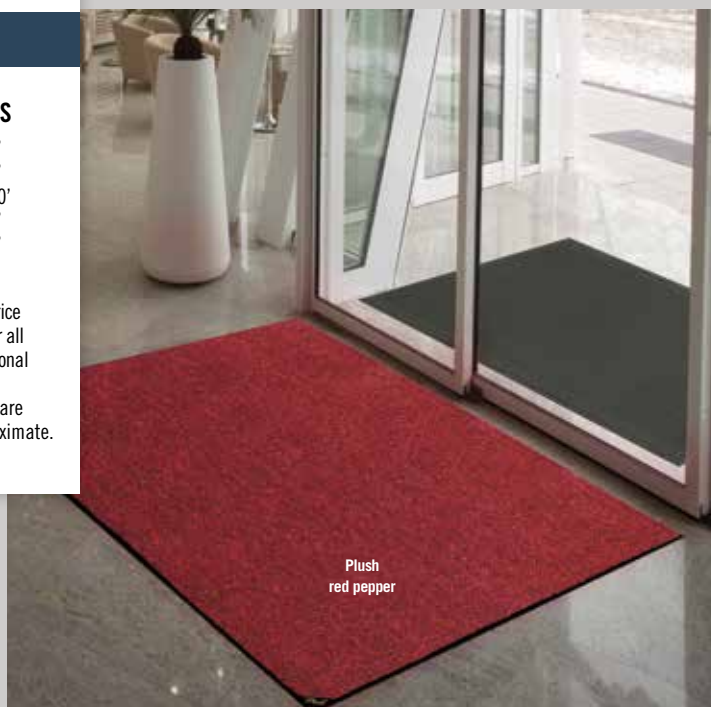
SIZES

2' x 3'
3' x 4'
3' x 10'
4' x 6'
4' x 8'

See price list for all additional sizes
Sizes are approximate.



Plush
red pepper



Plush
red pepper



66 black

48 brown/black

51 deeper navy

64 golden brown

67 midnight grey

76 red pepper

65 slate grey

53 dark green



WIPER/INDOOR



Impressionist
academy blue



Impressionist
academy blue

IMPRESSIONIST

3/8" Product No. 871

- Continuous filament olefin yarn is colorfast and resists stains
- Smooth non-skid vinyl backing
- Not launderable
- Designed to release dirt easily with daily vacuuming, or can be cleaned with any commercial carpet cleaning system

SIZES

2' x 3' 4' x 6'
3' x 4' 4' x 8'
3' x 5' 3' x 60'
3' x 6' 4' x 60'
3' x 10'

Sizes are approximate. See price list for all additional sizes. 3' and 4' in lengths up to 60'. 6' widths lengths up to 40'.



20 academy blue

21 burgundy

22 cardinal

23 black

24 forest green

25 navy blue

26 sable

27 salt & pepper



VICTORY

5/16" Product No. 873

- Fast drying polypropylene
- Multi-directional design is absorbent and effective for scraping off soil
- Smooth non-skid vinyl backing
- Not launderable
- Designed to release dirt easily with daily vacuuming, or can be cleaned with any commercial carpet cleaning system

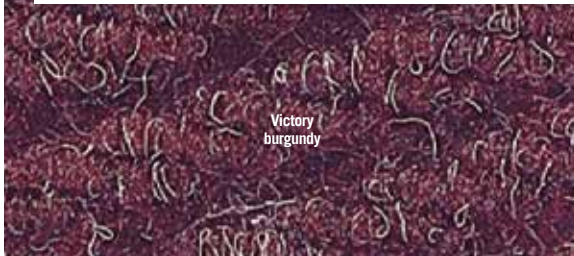
SIZES

2' x 3' 4' x 6'
3' x 4' 4' x 8'
3' x 5' 3' x 60'
3' x 6' 4' x 60'
3' x 10'

Sizes are approximate. See price list for all additional sizes. 3' and 4' in lengths up to 60'. 6' widths lengths up to 40'.



WIPER/INDOOR



WIPER/INDOOR

COBBLESTONE

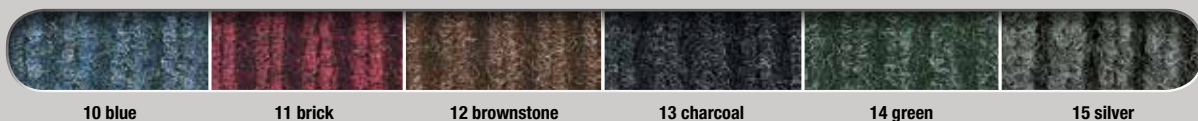
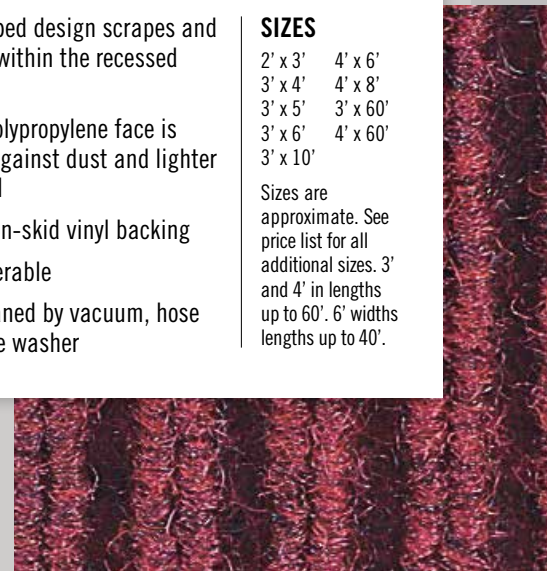
5/16" Product No. 870

- Sturdy ribbed design scrapes and traps soil within the recessed grooves
- Durable polypropylene face is effective against dust and lighter weight soil
- Smooth non-skid vinyl backing
- Not launderable
- Easily cleaned by vacuum, hose or pressure washer

SIZES

2' x 3' 4' x 6'
3' x 4' 4' x 8'
3' x 5' 3' x 60'
3' x 6' 4' x 60'
3' x 10'

Sizes are approximate. See price list for all additional sizes. 3' and 4' in lengths up to 60'. 6' widths lengths up to 40'.







LOGO MAT, SIGN MAT & MESSAGE MAT COLLECTION

WATERHOG IMPRESSIONS HD®

WATERHOG® LOGO INLAY

WATERHOG® ECO ELITE ROLL GOODS LOGO

BERBER ROLL GOODS LOGO

LEGACY INLAY

LEAGACY FASHION INLAY

WATERHOG® SCULPTURES

CLASSIC IMPRESSIONS™ HD CUSTOM SHAPE

CLASSIC IMPRESSIONS™ HD LOGO

GRAND IMPRESSIONS HD LOGO

CLASSIC IMPRESSIONS™ LOGO

SUPERSCAPE™ IMPRESSIONS LOGO

M+A Matting Logo Mat Program

M+A Matting offers numerous types of logo mats.

Each of these logo mat processes result in high quality products your customers will be very proud to use. Pricing is calculated by each individual design number and quantity. Different size logo mats and standard mats may not be combined for quantity discount.

Ordering Logo Mats is as easy as 1-2-3:

- 1) Visit www.mamattting.com to submit your logo file using our easy to use web page.
- 2) Log into your account and simply click on **"My Account"** and then **"Submit Design"**.
- 3) Complete the necessary information on the submit page, attach your logo file and then click on **"Send your design"**. Artwork should be 300 dpi or greater.

Your proof will be emailed back to you within 24 hours. Once your proof arrives by email, please take the following simple steps:

- 1) Approve or make necessary changes to the proof.
- 2) Return the art proof with any changes or approved art proof with purchase order and quantity of mats to artwork5@mamattting.com.

Acceptable	Unacceptable	Marginal
Vector Graphic Files:	Faxes	Color Prints*
AI, EPS, PDF, CDR, SVG	Emblems	Newspaper Ads
Image Files:	Copies of Emblems	Yellow Pages Ads
TIFF (600 DPI/PPI)	Banners	Business Cards
JPG (600 DPI/PPI)	Flags	
PNG (600 DPI/PPI)	Full Size Mats	
Black/White Ad Slicks	Badges	
Letterhead	Shirts	
Brochures	Hats	
Business Literature		

*Color prints, if available, may be submitted to show color placement for a design.



M+A Matting Logo Mat Program

Create your own proofs with M+A Matting Mobile App!

Visit your app store and search "M+A Matting" to download app.



M+A MATTING MOBILE APP

M+A Matting mobile app provides an easy way for users to search and view existing mat designs as well as create proofs using simple tools. Each user will be able to:

- Create proofs using the mobile device camera or by loading an image from their library
- Have access to a personal dashboard that saves all current and former artwork submissions associated with their account
- Get instant artwork approval using e-signature feature
- Track orders of designs that were created via the mobile app
- Filter search results by product category, size or mat orientation

M+A Matting's user friendly app is compatible with any mobile device. Below is a condensed list of compatible devices:

- Android
- Android tablets
- iPhone*
- iPad*
- iPod Touch*

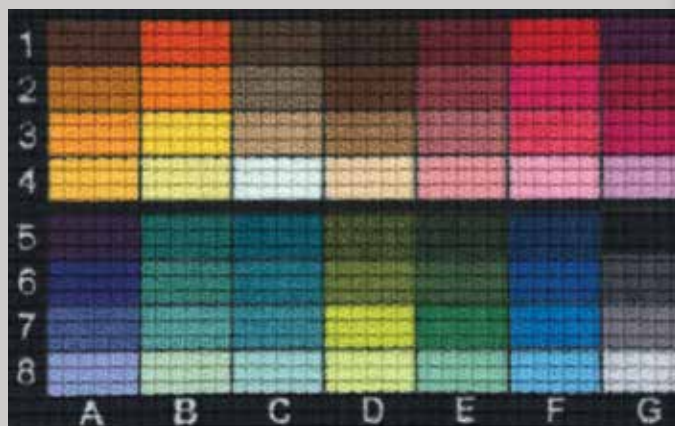
*all Apple products require iOS 6.0 or later



Waterhog
Impressions HD with
Classic Border



SCRAPER-WIPER/INDOOR-OUTDOOR



Color options

WATERHOG IMPRESSIONS HD®

3/8" Classic (Rubber Border) Product No. 2381
3/8" Fashion (Fabric Border) Product No. 2380

- State-of-the-art digital printing system with up to 57 standard color options
- Bi-level surface effectively removes and stores dirt and moisture beneath shoe level until cleaning
- Rubber reinforced face nubs prevent pile from crushing, extending the performance life of the product
- Molded nitrile rubber backing resists curling and cracking in all types of weather. Available in smooth and cleated backing types
- Available with your choice of classic rubber border or fashion fabric border
- Perfect for high traffic areas
- No set up charge! Free proofs in 24 hrs!

SIZES

2' x 3' 4' x 6'
3' x 4' 4' x 8'
3' x 5' 6' x 8'
3' x 10' 6' x 10'
3' x 12' 6' x 12'
3' x 16' 6' x 16'
3' x 20' 6' x 20'

Sizes are approximate. See price list for all additional sizes.



Waterhog Logo Inlay
red/black
Classic border

WATERHOG® LOGO INLAY

3/8" Classic (rubber border)
3/8" Fashion (fabric border)

Product No. 234
Product No. 235

- 100% UV resistant polypropylene fabric for indoor and outdoor placements
- Molded rubber backing resists curling and cracking in all types of weather. Available in smooth and cleated backing types.
- Earth-friendly rubber backing has 20% post-consumer recycled content
- Designs are created using a unique inlay process that can include up to 19 colors per mat at no additional charge
- Available with your choice of classic rubber border or fashion fabric border
- **No set up charge! Free proofs in 24 hrs!**
- Perfect for high traffic areas

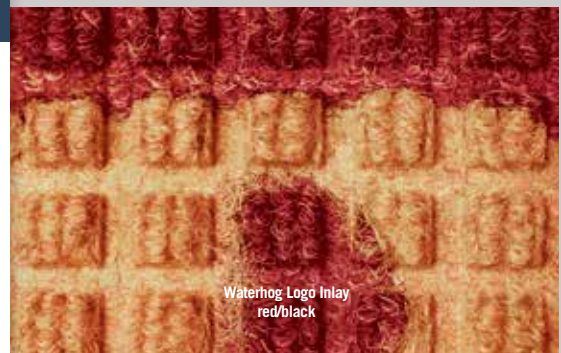
SIZES

2' x 3' 4' x 10'
3' x 4' 4' x 12'
3' x 5' 4' x 16'
3' x 10' 4' x 20'
3' x 12' 6' x 8'
3' x 16' 6' x 12'
3' x 20' 6' x 16'
4' x 6' 6' x 20'
4' x 8'

Sizes are approximate. See price list for all additional sizes.



ENTRANCE/SCRAPER-WIPER/INDOOR-OUTDOOR



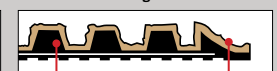
Waterhog Logo Inlay
red/black

Waterhog Classic



Rubber reinforced textile Rubber border

Waterhog Fashion



Rubber reinforced textile Fabric border



150 camel 151 medium brown 152 dark brown 153 light green* 154 charcoal 155 red/black 156 medium blue 157 medium grey 158 bluestone 159 evergreen



160 bordeaux 161 navy 162 white* 163 aquamarine* 164 gold* 165 solid red* 166 yellow* 167 orange* 168 purple*

*These colors are ONLY available in 3' and 4' widths.



www.mamattin.com



Waterhog Eco Elite Logo
sothern pine

WATERHOG® ECO ELITE ROLL GOODS LOGO

3/8" Product No. 2268



ENTRANCE/SCRAPER-WIPER/
INDOOR-OUTDOOR



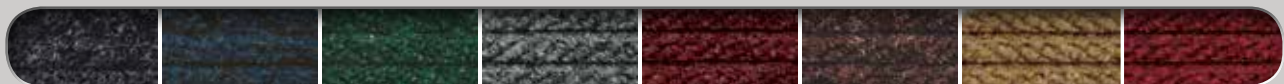
Waterhog Eco Elite Logo
sothern pine



- No set up charge! Free proofs in 24 hrs!
- 17 logo colors and 8 background colors to choose from
- Designed to be installed like carpeting or loose laid like mats
- Custom sizes over 6' wide are seamed together
- Custom sizes available with or without edging up to 12' x 50'

CUSTOM SIZES available in 3' to 12' widths in sizes up to 12' x 50'. See price list for additional information. Sizes are approximate.

BACKGROUND COLORS



170
black smoke

171
indigo

172
sothern pine

173
grey ash

174
maroon

175
chestnut brown

176
khaki

177
regal red

LOGO COLORS



gold

dark brown

bright red

dark green

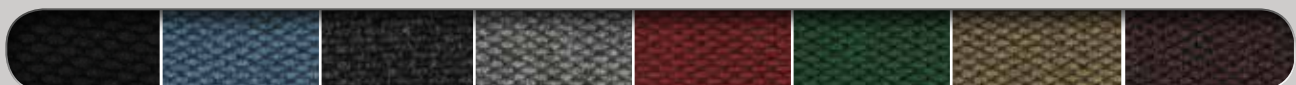
orange

dark blue

purple

light yellow

white



solid black

light blue

charcoal

grey

solid red

emerald green

sand

burgandy





Berber Roll Goods Logo
Black

BERBER ROLL GOODS LOGO

3/8" Product No. 2283

- Heavy needle punched fabric has 52 oz/sq yd face weight
- High performance rubber backing
- Polypropylene fabric is naturally stain resistant and easy to clean
- Solution dyed for excellent light & wet fastness
- 17 colors to choose from
- No setup charges
- Great for large entrance area installations and custom size applications

CUSTOM

SIZES available in 3' to 12' widths in sizes up to 12' x 50'. See price list for additional information. Sizes are approximate.

Widths over 6' will be seamed.



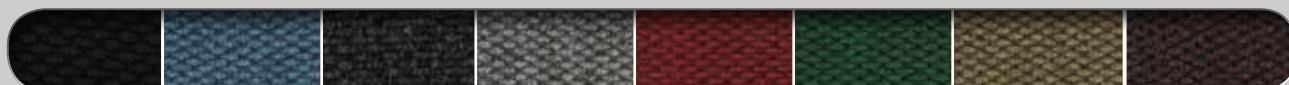
ENTRANCE/SCRAPER-WIPER/INDOOR-OUTDOOR



Berber Roll Goods Logo



gold dark brown bright red dark green orange dark blue purple light yellow white



solid black light blue charcoal grey solid red emerald green sand burgandy





ENTRANCE/SCRAPER-WIPER/INDOOR-OUTDOOR



Legacy Inlay
charcoal



150 camel 151 medium brown 152 dark brown 153 light green* 154 charcoal



155 red/black 156 medium blue 157 medium grey 158 bluestone 159 evergreen 160 bordaux



161 navy 162 white* 163 aquamarine* 164 gold* 165 solid red* 166 yellow* 167 orange* 168 purple*



MADE
IN THE
USA

*These colors are ONLY available in 3' and 4' widths.

LEGACY INLAY

3/8" Product No. 261

LEGACY FASHION INLAY

3/8" Product No. 262

- Same features as Waterhog Logo and Logo Fashion Inlay (page 41), only with a unique geometric pattern
- Recommended for commercial buildings, hotels, restaurants, healthcare facilities, office buildings and more

SIZES

2' x 3' 4' x 10'
3' x 4' 4' x 12'
3' x 5' 4' x 16'
3' x 8' 4' x 20'
3' x 10' 6' x 6'
3' x 12' 6' x 8'
3' x 16' 6' x 10'
3' x 20' 6' x 12'
4' x 4' 6' x 16'
4' x 6' 6' x 20'
4' x 8'

Sizes are approximate.



WATERHOG® SCULPTURES

3/8" Classic Border Product No. 355
3/8" Fashion Border Product No. 350

- 100% polypropylene fabric
- Earth-friendly rubber backing has 20% post-consumer recycled content. Resists curling and cracking.
- Solution dyed for excellent colorfastness
- Logo is permanently molded into the material and will not crush
- Affordable logo option when larger quantities of mats are required
- Perfect for home builders, real estate companies, apartment communities and large corporate accounts

SIZES

2' x 3' 3' x 10'
3' x 4' 4' x 6'
3' x 5' 4' x 8'

Sizes are approximate.
Minimum Order Quantity on 1st Order: 100 units.
Order Quantity on 2nd Order of a Design: 1 unit



ENTRANCE/SCRAPER-WIPER/INDOOR-OUTDOOR



Waterhog Sculptures
fashion border
red/black



150 camel 151 medium brown 152 dark brown 153 light green* 154 charcoal 155 red/black 156 medium blue 157 medium grey 158 bluestone 159 evergreen



160 bordaux 161 navy 162 white* 163 aquamarine* 164 gold* 165 solid red* 166 yellow* 167 orange* 168 purple*

*These colors are ONLY available in 3' and 4' widths.



MADE
IN THE
USA



Classic Impressions HD Custom Shape



LOGO/WIPER/INDOOR

CLASSIC IMPRESSIONS™ HD CUSTOM SHAPE

3/8" Product No. 733

- Heavy 32 oz/sq yd high twist heat-set nylon face fabric
- Heavy 90 mil rubber backing for added support and durability
- Rubber backing contains 20% recycled rubber from car tires
- Logos are printed onto carpet face; fine details and 3-D images are achievable
- 4 color process provides unlimited color options. PMS color matching is available with an upcharge.
- No set up charges, art proofs returned in 24 hours and fast ship times

23' maximum length.
3', 4', 5' widths available in cleated and smooth backing. 6' in smooth backing only.
See color chart on page 46 for color availability.
PMS custom color available at an additional charge.



Classic Impressions HD Custom Shape



Classic Impressions HD Custom Shape

100%
customer satisfaction
GUARANTEED

MADE
IN THE
USA



Classic Impressions HD Logo

CLASSIC IMPRESSIONS™ HD LOGO

3/8" SBR rubber border and backing
3/8" vinyl border and backing

Product No. 73
Product No. 73



GRAND IMPRESSIONS™ HD LOGO

3/8" serged border, recycled crumb rubber backing

Product No. 64

- Heavy 32 oz/sq yd high twist, heat-set nylon face fabric
- SBR rubber backing contains 20% recycled rubber from car tires
- Logos are printed onto carpet face; fine details, shading and 3-D images are achievable utilizing a state-of-the-art digital printer
- 4-color process- 150 color options and photographic quality designs
- No set up charges, art proofs in 24 hours and fast ship times (3-5 business days)
- Available with cleated backing (3', 4' and 5' widths only) for placement on carpet or smooth backing for hard floor surfaces
- Recommended for commercial buildings, hotels, restaurants, healthcare facilities, office buildings and more

SIZES

2' x 3'
3' x 4'
3' x 5'
3' x 10'
4' x 6'
4' x 8'
5' x 8'
5' x 10'
6' x 10'
6' x 12'

Sizes are approximate. See price list for all additional sizes. PMS custom color available at an additional charge.



Classic Impressions HD Logo



CLASSIC IMPRESSIONS™ LOGO

3/8" SBR or vinyl backing

Product No. 70

- Long-wearing, 26 oz/sq yd, static-dissipative nylon carpet
- Earth-friendly rubber backing contains 20% post-consumer recycled content resists curling and cracking
- Available with cleated backing (3', 4' and 5' widths only) for placement on carpet or smooth backing for hard floor surfaces
- No set up charge! Fast Service!
- Recommended for commercial buildings, hotels, restaurants, health care facilities, office buildings and more
- Search over a million designs in our logo database at www.mamattng.com

SIZES

2' x 3' 4' x 8'
3' x 4' 5' x 8'
3' x 5' 5' x 10'
3' x 10' 6' x 10'
4' x 6' 6' x 12'

Sizes are approximate. See price list for all additional sizes. PMS custom color available at an additional charge.



Classic Impressions
forest green



ENTRANCE/SCRAPER/INDOOR-OUTDOOR



SuperScape Impressions
logo

SUPERSCAPE IMPRESSIONS™ LOGO

3/16" Product No. 3559

- SuperScape Impressions Logo Mats offer a superior printing surface for your company logo or promotional message
- Multi-color images are created by molding a digitally printed polymeric material into durable nitrile rubber
- These long-lasting logo mats perform beautifully in all types of environments
- The high-traction surface effectively removes and traps tough dirt, grime and water from shoes
- 150 color options available. Photo-realistic images, print ready artwork, tones and shades are all produced with unparalleled detail and clarity.
- SuperScape Impressions™ are perfect for any application where colorful logo mats or message mats are needed
- Resistant to oils and chemicals

SIZES

2.5' x 3'
3' x 4'
3' x 5'
3' x 10'
4' x 6'
4' x 8'
6' x 6'
6' x 8'

Sizes are approximate. PMS custom color available at an additional charge.







ANTI-FATIGUE MAT & SLIP RESISTANT MAT COLLECTION

HOG HEAVEN®

HOG HEAVEN PRIME®

HOG HEAVEN PRIME DECOR™

HOG HEAVEN® MARBLE TOP

HOG HEAVEN® PLUSH

HOG HEAVEN® FASHION

GETFIT STANDUP™ MAT

HOG HEAVEN III™ MODULAR TILE COMFORT

HOG HEAVEN III™ LINKABLE MATS COMFORT

HOG HEAVEN III™ WORKSTATION MATS COMFORT

HOG HEAVEN III™ MODULAR TILE TRAFFIC

HOG HEAVEN III™ MODULAR TILE TRAFFIC DRAINABLE

HOG HEAVEN III™ LINKABLE MATS TRAFFIC

HOG HEAVEN III™ LINKABLE MATS TRAFFIC DRAINABLE

HOG HEAVEN III™ MODULAR TILE FASHION

HOG HEAVEN III™ LINKABLE MATS FASHION

HOG HEAVEN III™ WORKSTATION MATS FASHION

HOG HEAVEN III™ MODULAR TILE POLY

HOG HEAVEN III™ LINKABLE MATS POLY

HOG HEAVEN III™ WORKSTATION MATS POLY

HAPPY FEET®/HAPPY FEET® LINKABLE

COMPLETE COMFORT™

COMPLETE COMFORT™ II

COMFORT FLOW™/SCRAPE™

COMFORT FLOW™/SCRAPE™ HD MODULAR TILE

COMFORT FLOW™/SCRAPE™ HD LINKABLE MATS

COMFORT FLOW™/SCRAPE™ HD WORKSTATION MATS

WET STEP®

CUSHION STATION™

CUSHION MAX™

TRACTION TREAD

TRACTION TREAD SOFT

SURE CUSHION RIBBED, TEXTURE,

SURE CUSHION HEAVY DUTY, YELLOW BORDER

SURE TREAD V-GROOVE

KNEELING COMFORT™

SAFETY SCRAPE™

The Benefits of ANTI-FATIGUE MATS



Anti-Fatigue mats alleviate stress to the back and legs by providing a cushioned surface to stand on.

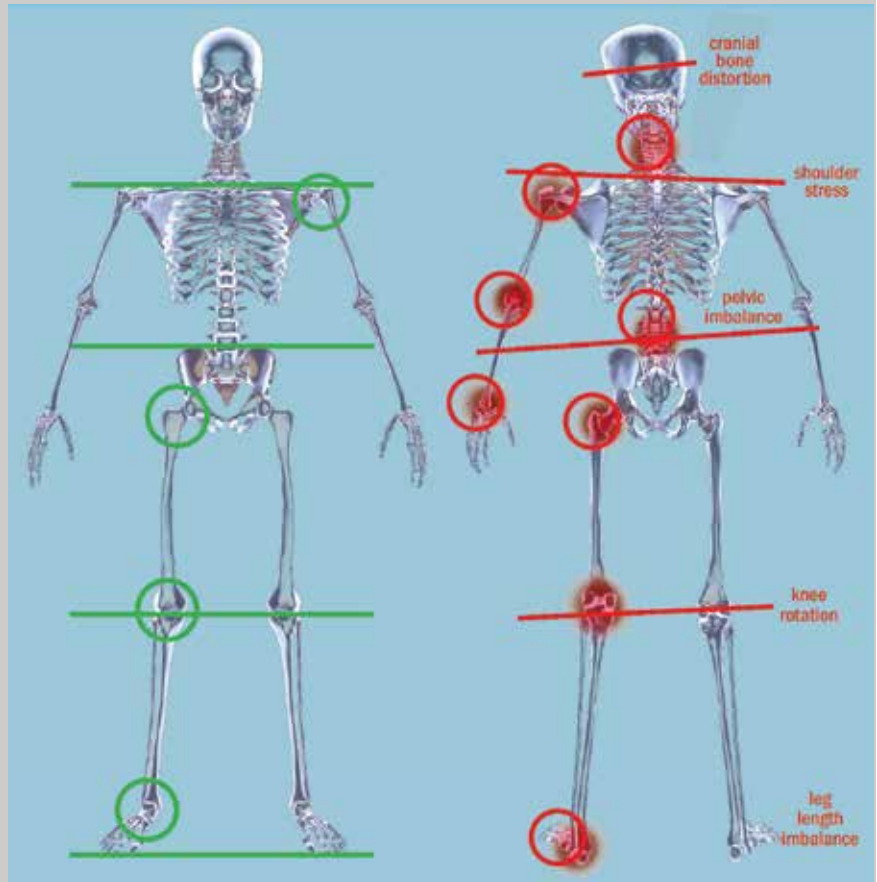
Anti-Fatigue mats are perfect for people who have to stand or work in the same place for continual periods of time.

Anti-Fatigue mats are recommended for a wide variety of industries and are commonly placed in various applications such as:

- Production or assembly lines
- Stand Up Desks or Workstations
- Kitchens
- Cashier Desks
- Laboratories and many more

M+A Matting Anti-Fatigue mats have been shown to do the following:

- **REDUCE ENERGY CONSUMPTION BY UP TO 50%** in the supporting muscles such as those in the leg and the lower back, when compared to standing on a hard floor
- **REDUCE FATIGUE** by promoting subtle movement in the leg and calf muscles, resulting in increased blood and oxygen flow



BALANCED

- Improves structural alignment and joint function
- Improves muscular balance and prevents nerve impingement
- Reduces uneven wear and tear on joints
- Body weight evenly distributed
- Efficient natural movement
- Reduced pressure on organs

IMBALANCED

- Neck pain and headaches
- Shoulder restrictions and pain
- Arm and hand pain nerve entrapment
- Bulging discs/back pain
- Uneven pressure/knee pain
- Uneven weight distribution
- Foot and ankle pain



Safety and Ergonomics

Mats are used throughout facilities in numerous other capacities where safety is a must and anti-fatigue comfort is essential to the health and well being of employees.

- Slip and falls are the second leading cause of all workplace injuries according to Liberty Mutual Workplace Index. As many as 25,000 people a day are victims of slip and fall accidents(NSC)
- Compensation and medical costs associated with employee slip and fall accidents total approximately \$70 Billion annually(NSC)
- The average cost of a slip and fall injury exceeds \$12,000(Wausau Insurance)
- The average cost to defend a slip and fall lawsuit is \$50,000(NFSI)
- Back injuries account for 25% of all worker compensation claims annually
- Cumulative Standing Trauma(CST) causes billions of dollars of loss annually due to reduced productivity, increased worker compensation, higher insurance rates and absenteeism
- According to the American College of Occupational and Environmental Science, about 38% of workers in the United States suffer from fatigue

Testing shows that Ergonomic Matting can reduce worker fatigue.

ESD Matting

ESD Matting is designed to quickly drain static electricity from people to help protect sensitive equipment from damage.

ESD Matting is divided into three classifications:

- 1. Electrically Conductive** is rated 10^1 to 10^5 and accepts static electricity the quickest. This is the most often used ESD matting.
- 2. Static Dissipative** is rated 10^6 to 10^9 and is the middle range of ESD matting.
- 3. Anti-Static** is rated 10^{10} to 10^{12} and accepts static the slowest.

ESD Matting is rated in ohms, or the measure of resistance. The lower the resistance, the more quickly static is accepted by the matting, i.e., the lower the exponential, the more quickly static is accepted.

Electrically Conductive Mats	
HOG HEAVEN™	
5/8" black border	Product No. 421
5/8" striped border	Product No. 423
7/8" black border	Product No. 422
7/8" striped border	Product No. 424
HOG HEAVEN™ III COMFORT	
18" x 18" Modular Tile Comfort	No. 4471
36" x 36" Modular Tile Comfort	No. 4472
Linkable Mats Comfort, black border	No. 4210
Linkable Mats Comfort, yellow border	No. 4211
HAPPY FEET™	
BLACK BORDER	
textured surface	Product No. 465
grip surface	Product No. 475
Linkable	
textured surface: end	Product No. 467
textured surface: middle	Product No. 469
grip surface: end	Product No. 477
grip surface: middle	Product No. 479
STRIPED BORDER	
textured surface	Product No. 466
grip surface	Product No. 476
Linkable	
textured surface: end	Product No. 468
textured surface: middle	Product No. 470
grip surface: end	Product No. 478
grip surface: middle	Product No. 480
TRACTION TREAD	
Product No. 50	

Static Dissipative Mats	
COMFORT FLOW™, COMFORT FLOW™ HD TILE	
Comfort Flow	Product No. 420
Comfort Scrape	Product No. 430
Comfort Flow HD Modular Tile	No. 401
Comfort Scrape HD Modular Tile	No. 4431
Comfort Flow HD Linkable Mats	No. 4434
Comfort Scrape HD Linkable Mats	No. 4435
CUSHION STATION™	
Without Holes	Product No. 370
With Holes	Product No. 371
TRACTION TREAD SOFT	
Product No. 56	

COMFORT FLOW/SCRAPE, COMFORT FLOW HD/SCRAPE HD MODULAR TILE & LINKABLE MATS, CUSHION STATION	
Surface to Ground	
50% Relative Humidity	12% Relative Humidity
3.7 x 10 ⁸ Ohms	4.5 x 10 ⁸ Ohms
Surface to Surface	
50% Relative Humidity	12% Relative Humidity
9.1 x 10 ⁸ Ohms	9.5 x 10 ⁸ Ohms
TRACTION TREAD SOFT	
Surface to Ground	
50% Relative Humidity	12% Relative Humidity
3.7 x 10 ⁸ Ohms	4.5 x 10 ⁸ Ohms
Surface to Surface	
50% Relative Humidity	12% Relative Humidity
9.1 x 10 ⁸ Ohms	9.5 x 10 ⁸ Ohms

Accessories

Ground Cords are used to allow static electricity to pass more efficiently to a ground and provide a controlled path. Use the cord to connect all ESD floor mats to a building ground. The terminal can be connected to an electrical outlet using the screw in the outlet cover.



Product No. 9911

Heel Grounders are made for workers wearing rubber soles and other insulating shoes. They allow static electricity to pass around the shoe into the ESD matting. Fasten the Heel Grounder to the heel of the shoe with the Velcro and allow the fabric strip to touch the sock or skin for best performance.



Product No. 924

HOG HEAVEN®



ANTI-FATIGUE/DRY OR WET ENVIRONMENTS/INDOOR

5/8" Black Border
5/8" Striped Border
7/8" Black Border
7/8" Striped Border

Product No. 421
Product No. 423
Product No. 422
Product No. 424

- Closed-cell nitrile blended cushion is permanently molded (not glued) to the nitrile rubber surface
- Rubber borders will not crack or curl
- Chemical resistant, grease/oil proof
- Electrically conductive
- Welding safe
- Certified high-traction by the National Floor Safety Institute (NFSI)
- Available in 5/8" and 7/8" thickness; black or OSHA-approved striped border
- Recommended for distribution, manufacturing, and retail facilities for picking lines, assembly lines, workstations, check-out stations, and more

SIZES

2' x 3'
3' x 5'
3' x 12'
4' x 6'
4.8' x 8'
Additional lengths up to 60'.
See price list for all additional sizes.

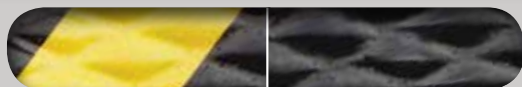
Sizes are approximate.



Hog Heaven caution yellow



Hog Heaven



02 caution yellow

black



ANTI-FATIGUE/DRY OR DAMP ENVIRONMENTS/INDOOR



Hog Heaven Prime black



Hog Heaven Prime black

HOG HEAVEN PRIME®

3/4" black

Product No. 4220

3/4" black w/yellow striped border

Product No. 4221

- Urethane foam comfort at an affordable price
- Nitrile rubber molded to a closed cell nitrile cushion for superior comfort and performance
- Edge-to-edge cushion
- High heel shoe safe, welding safe, and static dissipative
- Anti-microbial treated for lifetime protection against odors and degradation
- Beveled borders
- Chemical resistant, grease/oil proof
- Certified high-traction by the National Floor Safety Institute (NFSI)
- Recommended for use in areas such as distribution, light manufacturing, work stations, check out stations, retail and healthcare environments

SIZES

2' x 3'
3' x 5'
3' x 10'
Sizes are approximate.



1-black

black w/yellow striped border



HOG HEAVEN PRIME® DÉCOR

3/4" Product No. 4222

- Six designs in a fashionable black and black/grey color scheme that compliments all decors
- Durable woven PVC top is stain and "high heel" resistant
- Woven PVC top molded to a closed cell nitrile cushion for superior comfort and performance
- Edge-to-edge cushion, beveled borders
- Recommended for use in areas such as distribution, light manufacturing, work stations, check out stations, retail, healthcare, hospitality, and education environments

SIZES

2' x 3'
3' x 5'
3' x 10'
Sizes are approximate.



ANTI-FATIGUE/INDOOR



Hog Heaven Prime Décor
Damask



Hog Heaven Prime Décor
Botanical



Hog Heaven Prime Décor
Damask



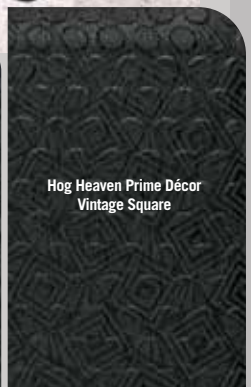
Hog Heaven Prime Décor
Greek Key



Hog Heaven Prime Décor
Onyx (solid black)



Hog Heaven Prime Décor
Texture



Hog Heaven Prime Décor
Vintage Square



ANTI-FATIGUE/INDOOR



Hog Heaven Marble Top
midnight swirl

HOG HEAVEN® MARBLE TOP

5/8" Product No. 448
7/8" Product No. 449

- Closed cell nitrile rubber cushion provides long lasting comfort
- Extra thick (.170") PVC/rubber top ensures long life
- Borders will not crack or curl
- Smooth diamond patterned top allows workers to pivot freely
- Surface is easy to clean
- Cushion is not glued on but is permanently molded to rubber top eliminating the possibility of delamination
- Anti-static

SIZES

2' x 3'
3' x 5'
3' x 12'
4' x 6'
Additional lengths up to 60'.
See price list for all additional sizes.

Sizes are approximate.



10 midnight swirl



11 granite dusk



12 blue merle



13 amber maple



HOG HEAVEN® PLUSH

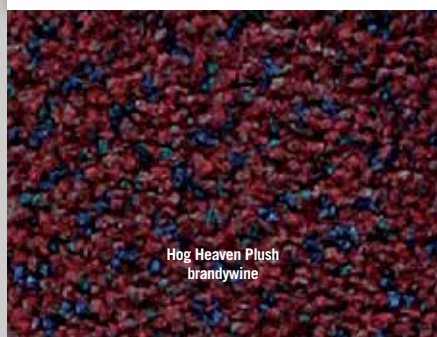
5/8" Product No. 446
7/8" Product No. 447

- Anti-static, slip-resistant 100% solution-dyed nylon top surface will not fade
- Closed-cell nitrile rubber cushion backing provides long-lasting comfort without breaking down
- Beveled edges and curved corners create a safer transition from mat to floor
- Designed for maximum worker comfort and striking appearance
- Ideal uses include concierge desk, bellman stand, copier station, registration desk and shipping desk

SIZES

2' x 3'
3' x 5'
3' x 12'
Additional lengths up to 60'.
See price list for all additional sizes.

Sizes are approximate.



HOG HEAVEN® FASHION

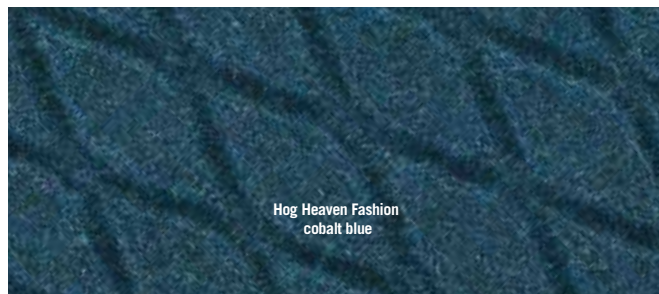
5/8" Product No. 441
7/8" Product No. 442

- Anti-static, slip-resistant 100% solution-dyed PET top surface will not fade
- Solution-dyed fabric is molded to a solid nitrile rubber surface for best durability
- Closed-cell nitrile rubber cushion backing is molded to the nitrile surface, providing a comfortable long-lasting mat
- Beveled border remains flexible for the life of the product and will not crack or curl
- Ideal uses include concierge desk, bellman stand, copier station, registration desk and shipping desk

SIZES

2' x 3'
3' x 5'
3' x 12'
Additional lengths up to 60'.
See price list for all additional sizes.

Sizes are approximate.





GetFit StandUp Mat
Red PET Fabric Top



ANTI-FATIGUE/INDOOR



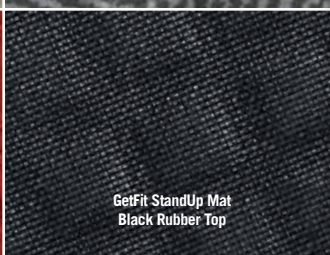
GetFit StandUp Mat
Tan Polyester Designer Top



GetFit StandUp Mat
Grey Polyester Designer Top



GetFit StandUp Mat
Red PET Fabric Top



GetFit StandUp Mat
Black Rubber Top

GETFIT STANDUP™ MAT

5/8" PET Fabric Top

Product No. 4443

5/8" Rubber Top

Product No. 4447

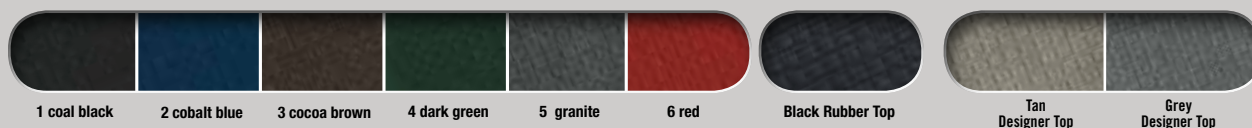
5/8" Polyester Designer Top

Product No. 4448

- Designed for use at stand up desks and provide workers with a comfortable surface to stand on for hours
- Standing at work helps you burn more calories and can actually help you lose weight
- Nitrile blended cushion for maximum comfort while standing long hours
- Edge-to-edge foam
- Available with a PET fabric top in 6 colors or a polyester designer top in 2 colors to match your office décor or a black rubber top for maximum durability
- Multiple sizes are available to fit the needs of your employees and their workspaces

SIZES

22" x 32"
22" x 50"
22" x 60"
34" x 47"
34" x 60"



1 coal black

2 cobalt blue

3 cocoa brown

4 dark green

5 granite

6 red

Black Rubber Top

Tan
Designer Top

Grey
Designer Top





Hog Heaven III Modular Tile Comfort
yellow border



ANTI-FATIGUE/DRY ENVIRONMENTS

HOG HEAVEN III MODULAR TILE COMFORT



Corner Tile
black border



Middle Tile
black border



Side Tile
black border

HOG HEAVEN III LINKABLE MATS COMFORT



Linkable Mat End
yellow border



Linkable Mat Middle
yellow border



Linkable Mat End
yellow border

HOG HEAVEN III™ MODULAR TILE COMFORT and HOG HEAVEN III™ LINKABLE MATS COMFORT

18" x 18" x 3/4" Modular Tile
36" x 36" x 3/4" Modular Tile
3/4" Linkable Mats black border
3/4" Linkable Mats yellow border

Product No. 4471
Product No. 4472
Product No. 4497
Product No. 4498

- Wedge-locking mechanism
- Outstanding anti-fatigue qualities for dry areas
- Solid 20% recycled nitrile rubber top surface has excellent chemical and oil resistance
- Closed cell nitrile rubber cushion provides long lasting comfort
- Welding safe
- Nitrile rubber surface is molded to the cushion backing (not glued) so the surface will not delaminate
- Rubber surface remains flexible for the life of the product and will not curl or crack
- Borders available in black or yellow striped
- Electrically conductive and certified high-traction by the National Floor Safety Institute (NFSI)
- Recommended for distribution, manufacturing and retail facilities for picking lines, assembly lines, work stations, check-out stations and more

HOG HEAVEN III™ WORKSTATION MATS COMFORT

3/4" Black border
3/4" Yellow border

Product No. 4493
Product No. 4494

MODULAR TILE SIZES

18" x 18"
Middle-01
18" x 18" x 3/4"
Side Black-02
18" x 21.875" x 3/4"
Corner Black-03
21.875" x 21.875" x 3/4"
Side Yellow-04
18" x 21.875" x 3/4"
Corner Yellow-05
21.875" x 21.875" x 3/4"

36" x 36"
Middle-01
36" x 36" x 3/4"
Side Black-02
36" x 39.875" x 3/4"
Corner Black-03
39.875" x 39.875" x 3/4"
Side Yellow-04
36" x 39.875" x 3/4"
Corner Yellow-05
39.875" x 39.875" x 3/4"

Color: Black with Black border or Yellow border

NOTE: Hog Heaven III Modular Tile Comfort is designed for square or rectangle installations only.

LINKABLE MAT SIZES

Mat End
39.875" x 43.75" x 3/4"
Mat Middle
36" x 43.75" x 3/4"

Color: Black with Black border or Yellow border

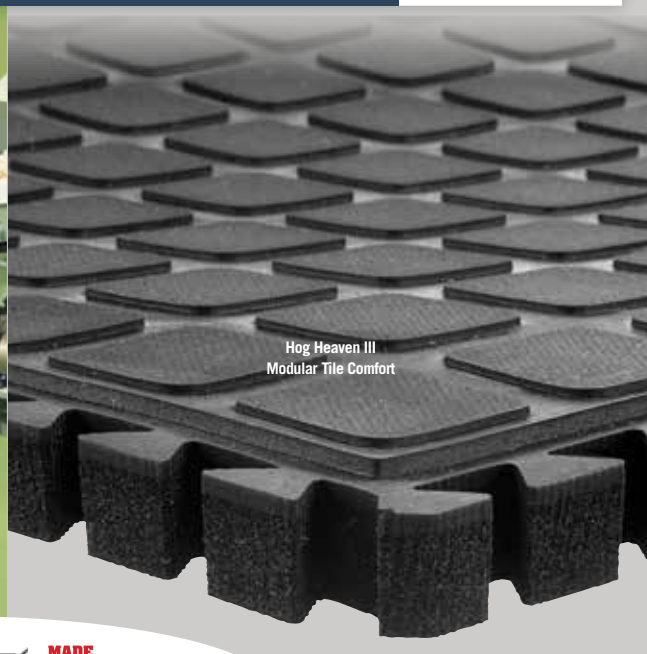
WORKSTATION MAT SIZE

43.75 x 43.75" x 3/4"

US Patent 8,919,054



Hog Heaven III
Workstation Mats Comfort
yellow border



Hog Heaven III
Modular Tile Comfort



ANTI-FATIGUE/DRY OR WET ENVIRONMENTS/INDOOR



Hog Heaven III
Modular Tile Traffic

HOG HEAVEN III LINKABLE MATS TRAFFIC

Black Border

Yellow Border



HOG HEAVEN III MODULAR TILE TRAFFIC



Side
yellow border



Middle



Corner
yellow border



Hog Heaven III Modular Tile Traffic
Drainable Middle

MODULAR TILE SIZES

18" x 18"
Middle-01
18" x 18" x 5/8"
Side-02
18" x 21.875" x 5/8"
Corner-03
21.875" x 21.875" x 5/8"

36" x 36"
Middle-01
36" x 36" x 5/8"
Side-02
36" x 39.875" x 5/8"
Corner-03
39.875" x 39.875" x 5/8"

LINKABLE MAT SIZES

Mat End
39.875 x 43.75" x 5/8"
Mat Middle
36" x 43.75" x 5/8"
US Patent 8,919,054

HOG HEAVEN III™ MODULAR TILE TRAFFIC & HOG HEAVEN III™ MODULAR TILE TRAFFIC DRAINABLE

18" x 18" x 5/8"	Modular Tile	Product No. 4477
36" x 36" x 5/8"	Modular Tile	Product No. 4478
18" x 18" x 5/8"	Modular Tile drainable	Product No. 4479
36" x 36" x 5/8"	Modular Tile drainable	Product No. 4480

HOG HEAVEN III™ LINKABLE MATS TRAFFIC

5/8"	Linkable Mats black border	Product No. 4491
5/8"	Linkable Mats yellow border	Product No. 4492

HOG HEAVEN III™ LINKABLE MATS TRAFFIC DRAINABLE

5/8"	Linkable Mats black border	Product No. 4488
5/8"	Linkable Mats yellow border	Product No. 4489

- Wedge-locking mechanism
- Firm ergonomic tile for workstations that require cart traffic
- Interlocks with Hog Heaven III Modular Tile Comfort to create a complete ergonomic flooring system
- 15% recycled high density closed cell nitrile rubber
- Borders available in black or yellow striped
- Chemical resistant, grease/oil proof
- Welding Safe
- Static Dissipative





Hog Heaven III
Workstation Mats Fashion
cobalt blue



Hog Heaven III
Modular Tile Fashion
granite

HOG HEAVEN III™ MODULAR TILE FASHION & LINKABLE MATS FASHION

18" x 18" x 3/4" Modular Tile
36" x 36" x 3/4" Modular Tile
3/4" Linkable Mats

Product No. 4484
Product No. 4485
Product No. 4476

- Wedge-locking mechanism
- Anti-static, slip-resistant 100% solution-dyed PET top surface will not fade
- Solution-dyed fabric is molded to a solid nitrile rubber surface for best durability
- Closed-cell nitrile rubber cushion backing keeps standing workers comfortable all day long
- Beveled border remains flexible for the life of the product and will not crack or curl
- Certified high-traction by the National Floor Safety Institute (NFSI)
- Ideal uses include concierge desk, bellman stand, copier station, registration desk, pharmacies and labs

HOG HEAVEN III™ WORKSTATION MATS FASHION

3/4" Product No. 4475

MODULAR TILE SIZES

18" x 18"
Middle-01
18" x 18" x 3/4"
Side-02
18" x 21.875" x 3/4"
Corner-03
21.875" x 21.875" x 3/4"

36" x 36"
Middle-01
36" x 36" x 3/4"
Side-02
36" x 39.875" x 3/4"
Corner-03
39.875" x 39.875" x 3/4"

NOTE: Hog Heaven III Modular Tile Fashion is designed for square or rectangle installations

LINKABLE MAT SIZES

Mat End
39.875 x 43.75" x 3/4"
Mat Middle
36" x 43.75" x 3/4"

WORKSTATION MAT SIZE

43.75 x 43.75" x 3/4"
US Patent 8,919,054



ANTI-FATIGUE/INDOOR

HOG HEAVEN III MODULAR TILE FASHION



Corner Tile
granite



Middle Tile
granite



Side Tile
granite

HOG HEAVEN III LINKABLE MATS FASHION



Linkable Mat End
granite



Linkable Mat Middle
granite



Linkable Mat End
granite

Hog Heaven III Modular Tile Fashion
granite

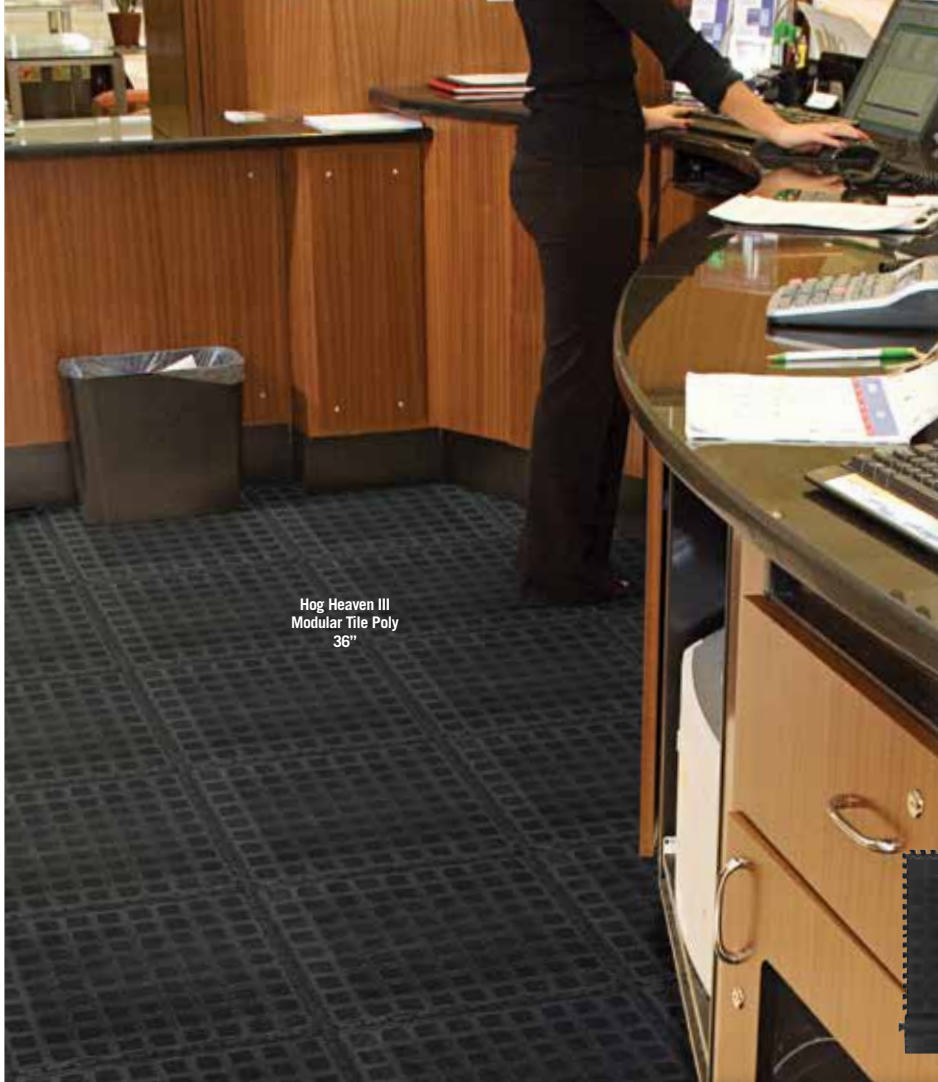


320 granite

321 cocoa brown

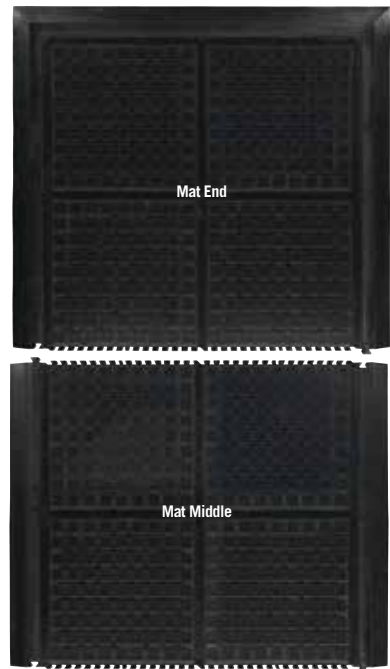
322 cobalt blue

323 coal black



Hog Heaven III
Modular Tile Poly
36"

HOG HEAVEN III MODULAR TILE MATS POLY



HOG HEAVEN III LINKABLE MATS POLY



MODULAR TILE SIZES

Corner tile
21.875" x 21.875" x 3/4"
39.875" x 39.875" x 3/4"
Side tile
18" x 21.875" x 3/4"
36" x 39.875" x 3/4"
Middle tile
18" x 18" x 3/4"
36" x 36" x 3/4"

LINKABLE MAT SIZES

Mat End
39.875" x 43.75" x 3/4"
Mat Middle
36" x 43.75" x 3/4"

WORKSTATION MAT SIZE

43.75" x 43.75" x 3/4"
US Patent 8,919,054



ANTI-FATIGUE/INDOOR

HOG HEAVEN III™ MODULAR TILE POLY

18"x 18"x 3/4"	Modular Tile	Product No. 4482
36"x 36"x 3/4"	Modular Tile	Product No. 4483

HOG HEAVEN III™ LINKABLE MATS POLY

3/4"	Linkable Mats	Product No. 4481
------	---------------	------------------

HOG HEAVEN III™ WORKSTATION MATS POLY

3/4"	Product No. 4487
------	------------------

- Wedge-locking mechanism
- Black woven PVC topping that is easy for sweeping and cleaning
- Fabric is molded to a solid nitrile rubber surface for best durability
- Outstanding anti-fatigue qualities for dry areas
- Closed cell nitrile rubber cushion provides long lasting comfort
- Versatile modular tile design allows for larger custom installations
- 3/4" thickness
- Perfect for use in retail facilities, check-out stations, work stations and more

Hog Heaven III
Modular Tile Poly



ANTI-FATIGUE/SLIP RESISTANT/DRY OR WET ENVIRONMENTS/INDOOR



Happy Feet
textured surface
caution yellow border

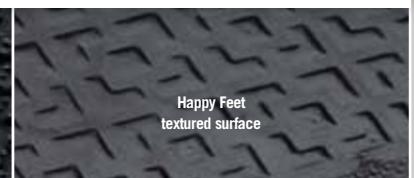


Happy Feet Linkable
textured surface
caution yellow border

(enlarged view)



Happy Feet
grip surface



Happy Feet
textured surface

HAPPY FEET®

BLACK BORDER

1/2"	textured surface	Product No. 465
1/2"	grip surface	Product No. 475
Linkable		
1/2"	textured surface: end	Product No. 467
1/2"	textured surface: middle	Product No. 469
1/2"	grip surface: end	Product No. 477
1/2"	grip surface: middle	Product No. 479

STRIPED BORDER

1/2"	textured surface	Product No. 466
1/2"	grip surface	Product No. 476
Linkable		
1/2"	textured surface: end	Product No. 468
1/2"	textured surface: middle	Product No. 470
1/2"	grip surface: end	Product No. 478
1/2"	grip surface: middle	Product No. 480

- Constructed with a dense cushion encapsulated within oil/grease proof nitrile rubber
- Green friendly, nitrile rubber has 20% recycled content
- Electrically conductive. Safe for use in computer rooms and electrical part manufacturing areas.
- Certified high-traction by the National Floor Safety Institute (NFSI)
- Can be autoclave sterilized
- Specific applications include grates, heavy chemicals, heavy oils and welding areas
- Available in 2 surface types—
Textured Surface: For dry/damp areas where traction is unnecessary. Grip Surface: For wet areas where maximum traction and/or scraping is needed.

MAT SIZES

2' x 3'
3' x 5'
Sizes are approximate.

LINKABLE SIZES

Linkable
End
34" x 59.875"
Linkable
Middle
34" x 61.25"



02 caution yellow



black

COMPLETE COMFORT™

5/8" without holes Product No. 494
5/8" with holes Product No. 496

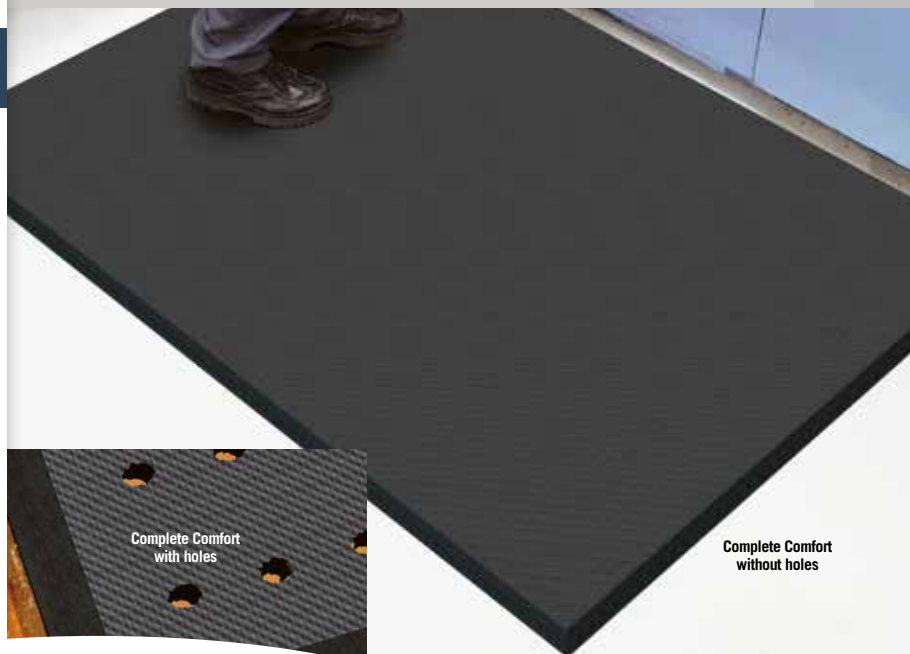
- Ergonomically superior anti-fatigue mat
- 100% closed-cell nitrile rubber construction with anti-microbial properties
- Beveled edges for easier floor-to-mat transition
- Slip resistant surface is oil/grease proof and chemical resistant
- Lightweight and easy to clean
- Color: Black
- Recommended for wet and dry areas such as kitchens or industrial areas
- Certified high-traction by the National Floor Safety Institute (NFSI)

SIZES

2' x 3'
3' x 4'
3' x 5'
3' x 10'
4' x 6'
4' x 8'
3' and 4' widths available in lengths up to 75'. See price list for all additional sizes. Sizes are approximate.



ANTI-FATIGUE/DRY OR WET ENVIRONMENTS/INDOOR



Complete Comfort with holes

Complete Comfort without holes

100%
customer satisfaction
GUARANTEED

NFSI
HIGH-TRACTION

MADE
IN THE
USA



ANTI-FATIGUE/DRY OR WET ENVIRONMENTS/INDOOR

COMPLETE COMFORT™ II

5/8" Product No. 594

- High-density, closed-cell nitrile rubber cushion has 15% recycled content
- Chemical resistant, grease/oil proof
- Welding safe and static dissipative
- Beveled edges for safe transition from mat to floor
- Lifetime anti-microbial treatment to prevent odors and degradation
- Can be autoclave sterilized
- Recommended for use in wet or dry environments for healthcare, foodservice and industrial application

SIZES

2' x 3'
3' x 4'
3' x 5'
4' x 6'

Sizes are approximate.



Complete Comfort II back



Complete Comfort II

Complete Comfort II

100%
customer satisfaction
GUARANTEED

MADE
IN THE
USA



Comfort Flow



ANTI-FATIGUE/SLIP RESISTANT/DRY OR WET ENVIRONMENTS/INDOOR-OUTDOOR



Comfort Flow



Comfort Scrape

COMFORT FLOW™ & COMFORT SCRAPE™

3/8" Comfort Flow
3/8" Comfort Scrape

Product No. 420
Product No. 430

- High-density, closed-cell nitrile rubber cushion has 15% recycled content
- Grease/oil proof, chemical resistant
- Welding safe and static dissipative
- Beveled edges for safe transition from mat to floor
- Lifetime anti-microbial treatment to prevent odors and degradation of the mat
- Comfort Flow has drainage holes to allow liquids to flow through. Comfort Scrape has non-draining surface
- Lightweight and flexible for easy handling and cleaning
- Certified high-traction by the National Floor Safety Institute (NFSI)
- Recommended for kitchens and industrial applications

SIZES

2' x 3'
3' x 5'
4' x 6'
3' x 9'

Sizes are approximate.

**COMFORT FLOW™ HD
MODULAR TILE
& LINKABLE MATS
COMFORT SCRAPE™ HD
MODULAR TILE
& LINKABLE MATS**

5/8"	Comfort Flow HD Modular Tile	Product No. 4430
5/8"	Comfort Scrape HD Modular Tile	Product No. 4431
5/8"	Comfort Flow HD Linkable Mats	Product No. 4434
5/8"	Comfort Scrape HD Linkable Mats	Product No. 4435

- High-density, closed-cell nitrile rubber cushion has 15% recycled content
- Comfort Flow Modular Tiles can be custom fit in any work station configuration
- Lightweight and flexible for easy handling
- Welding safe
- Grease/oil proof, chemical resistant
- Certified high-traction by the National Floor Safety Institute (NFSI)
- Beveled edges for safe transition from mat to floor
- Lifetime anti-microbial treatment to prevent odors and degradation of the mat
- Comfort Flow has drainage holes to allow liquids to flow through
- Comfort Scrape has non-draining surface
- Recommended for industrial and kitchen applications

COMFORT FLOW™ HD & COMFORT SCRAPE™ HD WORKSTATION MATS

5/8" Comfort Flow HD Workstation Mat	Product No. 4439
5/8" Comfort Scrape HD Workstation Mat	Product No. 4440

MODULAR TILE SIZES

Corner tile
19.125" x 19.125" x 5/8"
37.375" x 37.375" x 5/8"

Side tile
18" x 19.125" x 5/8"
36" x 37.375" x 5/8"

Middle tile
18" x 18" x 5/8"
36" x 36" x 5/8"

LINKABLE MAT SIZES

Mat End
37.125" x 39" x 5/8"

Mat Middle
36" x 39" x 5/8"

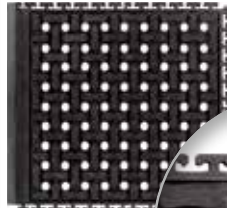
WORKSTATION MAT SIZES

39" x 39" x 5/8"

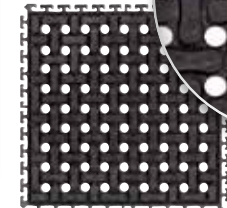


ANTI-FATIGUE/SLIP RESISTANT/DRY OR WET ENVIRONMENTS/INDOOR-OUTDOOR

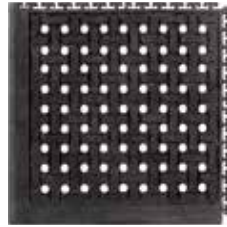
COMFORT FLOW HD MODULAR TILE



Side Tile

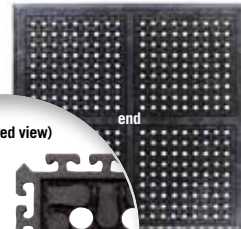


Middle Tile

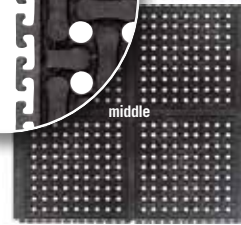


Corner Tile

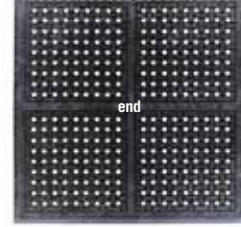
COMFORT FLOW HD LINKABLE MATS



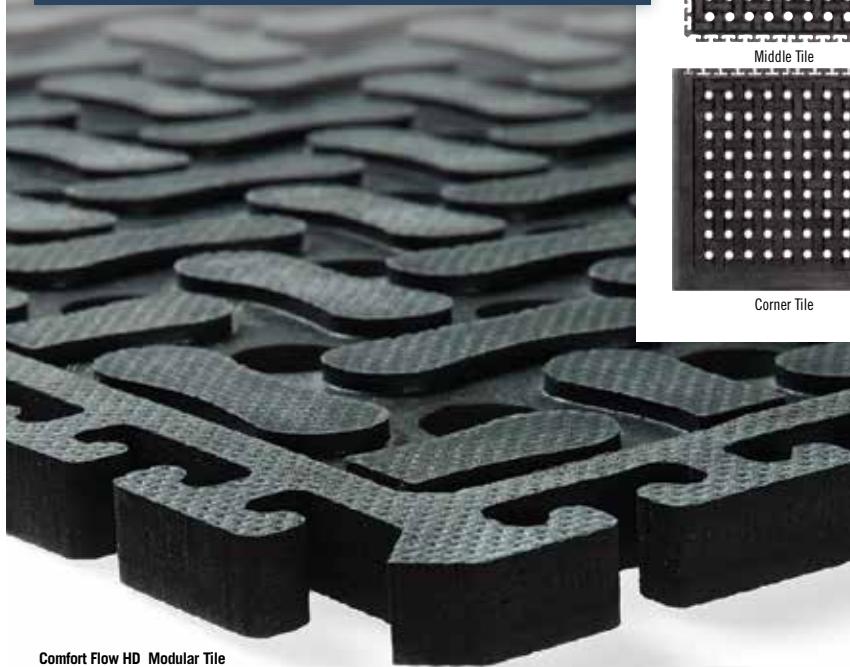
end



middle



end



Comfort Flow HD Modular Tile



Comfort Flow HD Workstation Mats



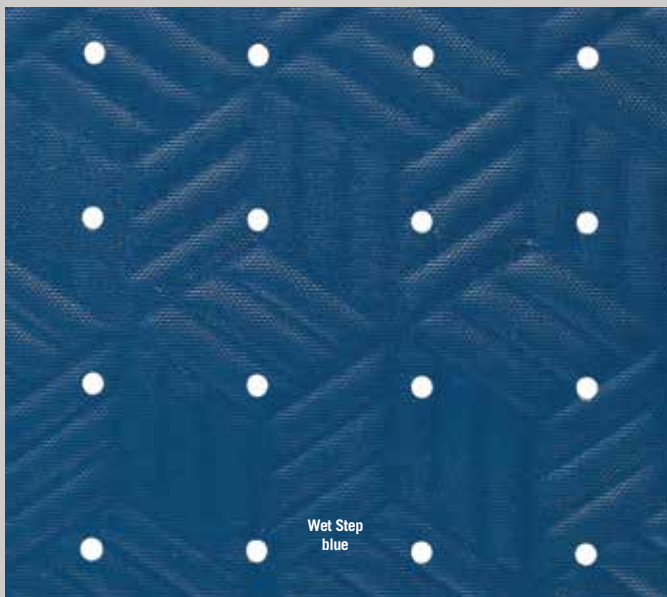
www.mamattng.com



Wet Step
blue



SLIP RESISTANT/WET ENVIRONMENTS/INDOOR-OUTDOOR



Wet Step
blue

WET STEP®

1/4" Product No. 789

- Unique design provides excellent slip resistance and anti-fatigue properties
- Soft to walk on with bare feet
- Perfect for use in wet areas. Drain holes allow water to freely drain away.
- Anti-microbial treated for lifetime protection against odors and degradation
- Durable closed cell nitrile rubber cushion is UV resistant and will last for years
- Can be autoclave sterilized for health care use
- Recommended for use in locker rooms, showers, spas and around pools and hot tubs. Also recommended for use in operating rooms and medical scrub areas.

SIZES

2' x 3'
3' x 5'
3' x 10'
3' x 20'

Additional lengths up to 20'. See price list for all additional sizes.

Sizes are approximate.



blue

grey

CUSHION STATION™

7/16" without holes Product No. 370
7/16" with holes Product No. 371

- Highly durable closed-cell nitrile rubber cushion combined with uniquely designed construction affords excellent anti-fatigue properties
- Grease/oil proof, chemical resistant
- Static dissipative
- Welding safe
- Designed for use in wet or dry areas. Available with and without holes
- Anti-microbial treated for lifetime protection against odors and degradation
- Available in standard sizes up to 20' long
- Flexible nitrile cushion construction can be cleaned easily
- Can be autoclave sterilized
- Certified high-traction by the National Floor Safety Institute (NFSI)
- Cushion Station mats are ideal for use in machine shops, work stations or other heavy industrial applications, medical facility environments (i.e., operating rooms, delivery rooms, etc.) kitchens, showers, and locker rooms

SIZES

2' x 3.2'
3.2' x 5.3'
3.2' x 8.3'
3.2' x 12.3'
3.2' x 16.1'
3.2' x 20.1'
4' x 5.92'
4' x 8.3'
4' x 12.3'
4' x 16.1'
4' x 20.1'

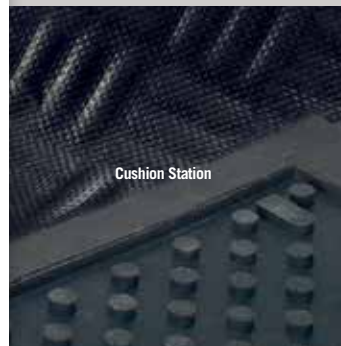
Sizes are approximate.



ANTI-FATIGUE/SLIP RESISTANT/DRY OR WET ENVIRONMENTS/INDOOR



Cushion Station with holes



Cushion Station



Cushion Station with holes



ANTI-FATIGUE/DRY OR WET ENVIRONMENTS/INDOOR

CUSHION MAX™

5/8" with holes Product No. 413
5/8" without holes Product No. 414

- Closed-cell nitrile blended cushion
- Grease/oil proof, chemical resistant
- Certified high-traction by the National Floor Safety Institute (NFSI)
- Lasts 3 times longer than traditional 100% PVC foam mats
- Tapered border provides a safe transition from the mat to the floor

SIZES

2' x 3'
3' x 5'
3' x 12'
4' x 6'
Additional lengths up to 45'. See price list for all additional sizes.

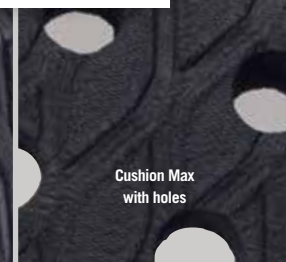
Sizes are approximate.



Cushion Max without holes



Cushion Max without holes



Cushion Max with holes



TRACTION TREAD

1/8" Product No. 50

- Slip-resistant floor protection matting made from chemical-resistant nitrile rubber
- 20% post-consumer recycled rubber content
- UV protected, grease/oil-proof, welding safe and electrically conductive
- Designed for various applications including laboratories, locker rooms, parts departments, and other commercial and industrial applications

SIZES

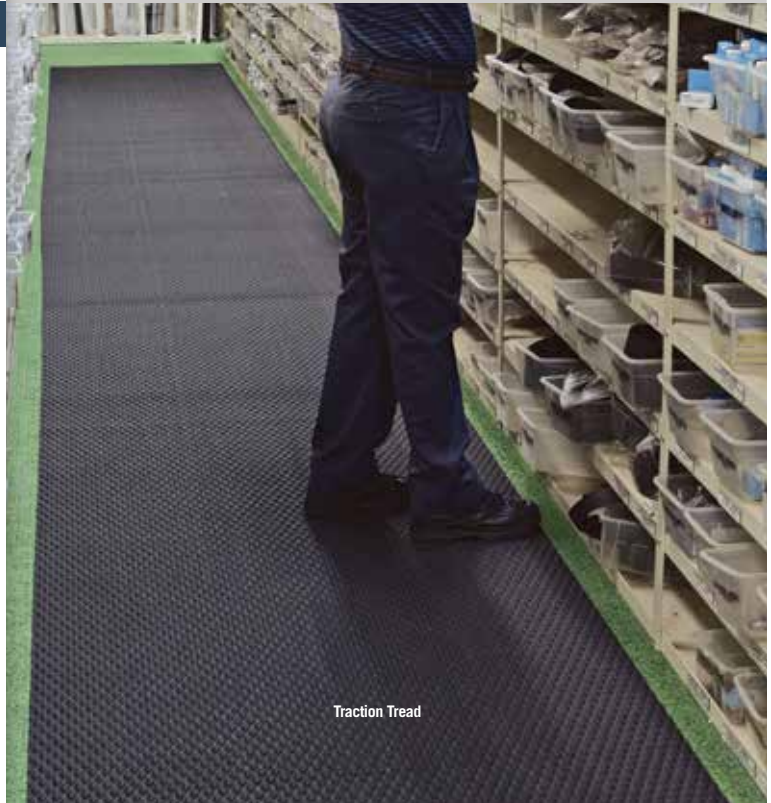
33" x 40' Roll
44" x 40' Roll
58" x 40' Roll

See price list for all additional sizes.

Sizes are approximate.



Traction Tread



Traction Tread



SLIP RESISTANT/DRY OR WET ENVIRONMENTS/INDOOR



ANTI-FATIGUE/SLIP RESISTANT/DRY OR WET ENVIRONMENTS/INDOOR



Traction Tread Soft

TRACTION TREAD SOFT

1/4" Product No. 56

- Slip-resistant floor protection matting made from chemical-resistant, high density nitrile rubber foam
- Contains 15% post-consumer recycled rubber content
- UV protected, grease/oil-proof, welding safe and static dissipative
- Anti-microbial treated
- Ideal for numerous production locations, walkways, gym floor protection, parts counters, lab areas and food service applications

SIZES

33" x 40' Roll
44" x 40' Roll
58" x 40' Roll

See price list for all additional sizes.

Sizes are approximate.



Traction Tread Soft

SURE CUSHION RIBBED

3/8" Product No. 415

- Ribbed PVC foam*

SIZES

2' x 3' 2' x 60'
3' x 5' 3' x 60'
3' x 12' 4' x 60'

Additional lengths up to 60'. See price list for all additional sizes.
Sizes are approximate.

SURE CUSHION TEXTURE

3/8" Product No. 425

- Textured PVC foam*

SIZES

2' x 3' 3' x 12'
3' x 5' 3' x 60'

Additional lengths up to 60'. See price list for all additional sizes.
Sizes are approximate.

SURE CUSHION HEAVY DUTY

1/2" Product No. 428

- PVC foam for heavy use areas*
- 80 mil solid vinyl surface combined with a non-closed cell vinyl cushion back
- Beveled on all sides for safety

SIZES

2' x 3' 3' x 12'
3' x 5' 3' x 60'

Additional lengths up to 60'. See price list for all additional sizes.
Sizes are approximate.

SURE CUSHION YELLOW BORDER

3/8" Product No. 427

- PVC foam with yellow border on two sides*

SIZES

2' x 3' 3' x 12'
3' x 5' 3' x 60'

Additional lengths up to 60'. See price list for all additional sizes.
Sizes are approximate.

SURE TREAD V-GROOVE

1/8" Product No. 505

- Solid vinyl
- Chemical resistant
- Provides protection for all types of floors from abuse due to chairs, tables and foot traffic
- Great for walkways, inclines and ramps
- Can be rolled for easy storage

SIZES

3' x 105'
4' x 105'

Additional lengths available.
Sizes are approximate.



ANTI-FATIGUE/FLOOR
PROTECTION/INDOOR



Sure Cushion Ribbed

Sure Cushion Texture

Sure Cushion Heavy Duty

Sure Cushion Yellow Border

Sure Tread V-Groove

* NOT guaranteed against damage from high heels, casters or chair legs. Not recommended for use in wet areas.



MADE
IN THE
USA



ANTI-FATIGUE/DRY OR WET
ENVIRONMENTS/INDOOR-OUTDOOR



KNEELING COMFORT™

7/8" Product No. 433

- Closed-cell blended nitrile rubber cushion with nitrile rubber base
- Electrically conductive, grease/oil proof
- Will not absorb liquids
- Reduces knee trauma and low back stress
- Built-in handle is convenient to carry & store
- Cleans easily with soap and water
- Ideal for occupations that require kneeling such as construction workers, technicians, mechanics, engineers, utility workers, manufacturers or anyone who moves from place to place to perform work tasks

SIZES

12" x 22"
18" x 30"

Sizes are approximate.



SAFETY SCRAPE™

1/8" Product No. 545

- Molded grip-surface effectively scrapes tough dirt and grime off shoes and provides an excellent anti-slip surface
- Durable rubber construction
- UV stable
- Available in cleated backing
- Recommended for use in locker rooms, outside of entrances and grocery store produce areas

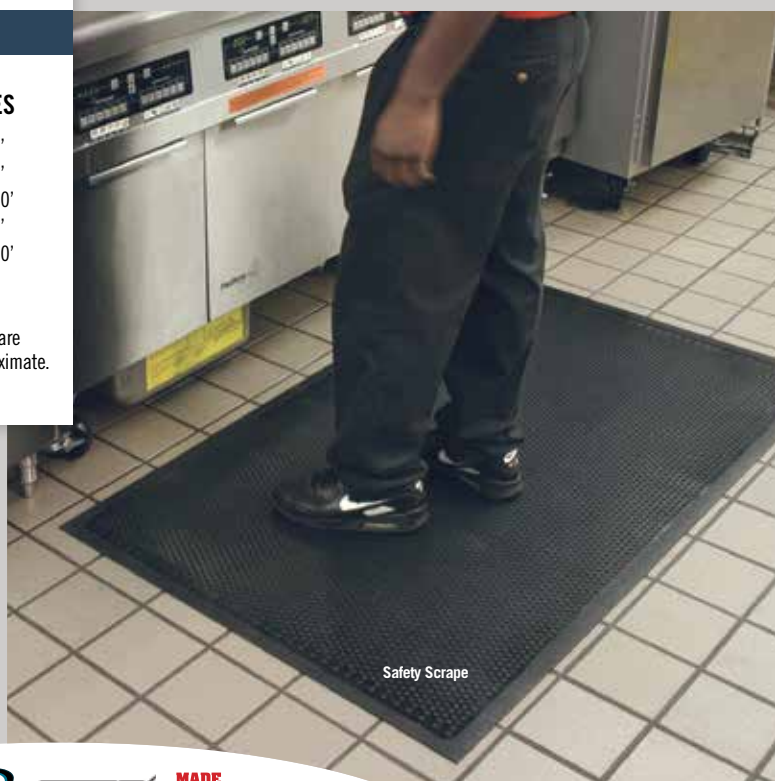
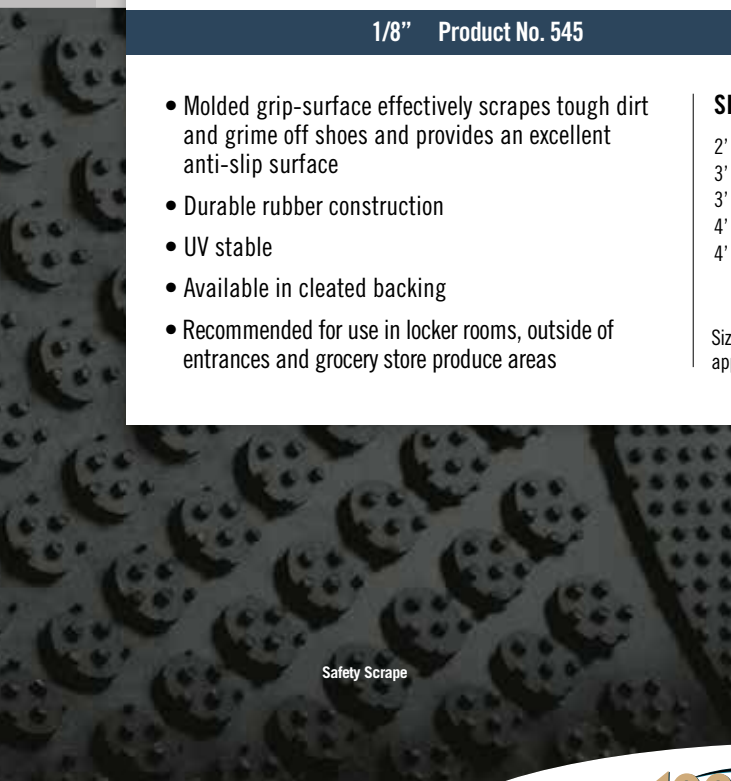
SIZES

2' x 3'
3' x 5'
3' x 10'
4' x 6'
4' x 10'

Sizes are approximate.



ENTRANCE/SCRAPER/INDOOR-OUTDOOR



Safety Scrape

Safety Scrape

M+A Matting is Committed to Environmental Responsibility

M+A Matting ENVIRONMENTAL POLICY

M+A Matting believes that businesses are responsible for achieving good environmental practices and operating in a sustainable manner.

We are therefore committed to reducing our environmental impact and continually improving our environmental performance as an integral and fundamental part of our business strategy and operating methods.

Our Policy is to:

- Wholly support and comply with or exceed the requirements of current environmental legislation
- Minimize our waste and then reuse or recycle as much of it as possible
- Minimize energy and water usage in our buildings and processes in order to conserve supplies, and minimize our consumption of natural resources, especially where they are non-renewable
- Apply the principles of continuous improvement in respect of air, water, noise and light pollution from our premises and reduce any impacts from our operations on the environment and local community
- As much as possible, purchase products and services that do the least damage to the environment and encourage others to do the same
- Assess the environmental impact of any new processes or products we intend to introduce in advance
- Ensure that all employees understand our Environmental Policy and conform to the high standards it requires
- Address complaints about any breach of our Environmental Policy promptly and to the satisfaction of all concerned
- Update our Environmental Policy annually in consultation with staff, associates and customers

LAST YEAR WE RECYCLED...

- 90% of our waste stream
- 1,686,030 lbs of recycled rubber into our products, keeping over 57,000 car tires out of our landfills
- Over 18 million (949,028 lbs) 20 oz recycled drink bottles (PET Polyester) in the manufacturing of our Waterhog Eco products. If you placed these bottles end to end they would reach from Atlanta to San Francisco.
- Over 32,000 mats (220,847 lbs). If placed in one stack of 3' x 5' mats, the stack would be taller than an 80 story building.



*We have over 50 products
with recycled content.*

*ENVIRO PLUS has over
85% total recycled
content!*



Enviro Plus

MAT RECYCLING PROGRAM



M+A Matting is pleased to offer our customers the capabilities of recycling all obsolete or worn out rubber backed mats. We certify that none of the mats returned are placed in a landfill. The obsolete or worn out mats will be ground up to be used either in manufacturing other mats or used for boiler fuel.

**For more information, call us
at 1-800-241-4696 or e-mail
customerservice5@mamattng.com**





M + A MATTING

www.mamattng.com

M+A MATTING • 340 CROSS PLAINS BLVD • DALTON, GA 30721
TOLL FREE 800.241.4696 • 706.277.2551 • FAX 706.277.3170